

# North Central Massachusetts

## FAMILY RESOURCE GUIDE



Serving the communities of:

Ashburnham  
Athol  
Barre  
Bolton  
Clinton  
Fitchburg

Gardner  
Hardwick  
Holden  
Hubbardston  
Lancaster

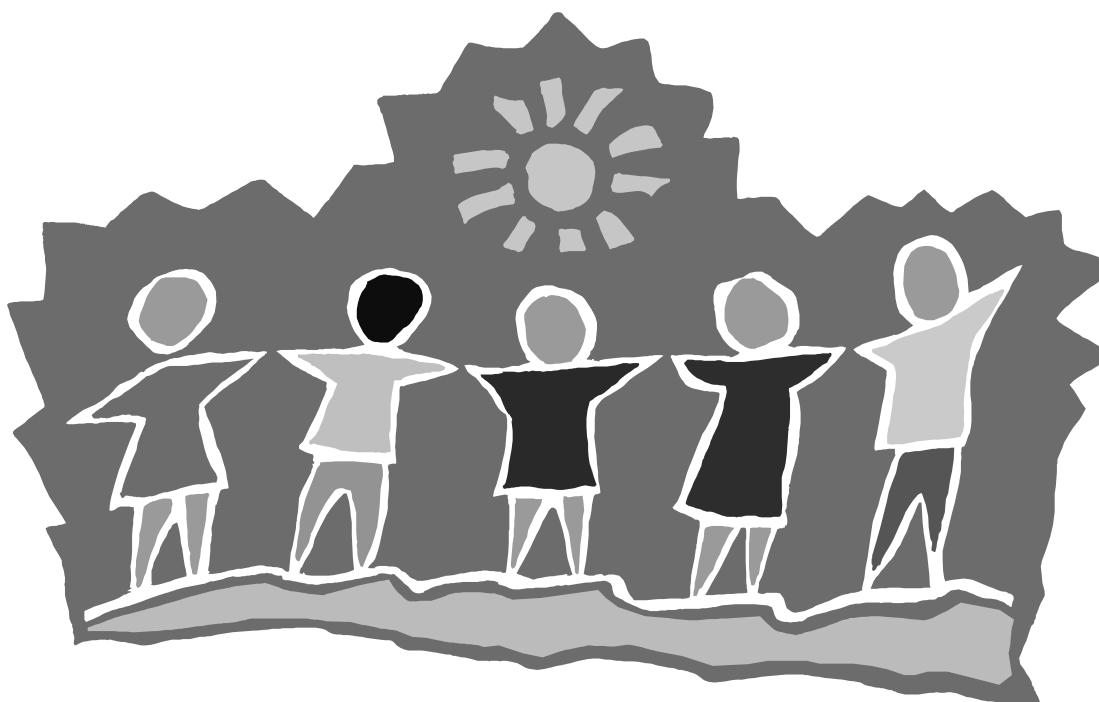
Leominster  
New Braintree  
Oakham  
Paxton  
Princeton

Royalston  
Rutland  
Sterling  
Stow  
Westminster  
Winchendon

Published January 2015

# North Central Massachusetts

## FAMILY RESOURCE GUIDE



**Serving the communities of:**

Ashburnham  
Athol  
Barre  
Bolton  
Clinton  
Fitchburg

Gardner  
Hardwick  
Holden  
Hubbardston  
Lancaster

Leominster  
New Braintree  
Oakham  
Paxton  
Princeton

Royalston  
Rutland  
Sterling  
Stow  
Westminster  
Winchendon

Published January 2015

This *North Central Massachusetts Family Resource Guide* has been developed to help individuals, families, and professionals connect with many of the resources available in the North Central Massachusetts area. Whether you are looking for preschool or adult services, recreation opportunities, emergency support, government programs, housing or health services, we hope that this guide will be a good place to begin.

The following programs, funded by grants from the **Massachusetts Department of Early Education and Care (EEC)**, collaborated to produce this family resource guide:

- *Ashburnham-Westminster Community Partnership for Children*
- *Clinton Community Partnerships for Children*
- *Leominster Project Apples, CFCE*
- *Valuing Our Children, Athol-Royalston*
- *MOC Community Partnership, Fitchburg*
- *MOC Community Partnership, Gardner*
- *MOC Community Partnership, Quabbin*
- *Nashoba Community Partnerships for Children*
- *Wachusett Coordinated Family & Community Engagement Program*
- *Winchendon Community Partnerships for Children*

---

*Please note: Although every effort has been made to provide complete and accurate information, those involved in developing this resource guide make no warranties as to the accuracy of the content. We assume no liability or responsibility for any errors or omissions in the information. Reference to any organization or agency does not constitute an endorsement or recommendation of that agency or organization.*

---

## To Begin: A Few Helpful Online Resources

---

### [www.mass.gov/eec](http://www.mass.gov/eec)

Mass. Department of Early Education and Care: Useful information and resources on child care providers, financial assistance options, grants (for individuals and organizations), professional development, special education, family support, regulations and policies.

### [www.mass.gov](http://www.mass.gov)

The official website of the Commonwealth of Massachusetts.

### [www.mass211.org](http://www.mass211.org)

With the support of social service organizations that provide health and human services throughout Massachusetts and in collaboration with Massachusetts Association of Information and Referral Specialists (MAIRS), the United Way introduces this statewide Information & Referral System.

By phone: Dial 2-1-1. If you are unable to reach 2-1-1 due to your telephone or cell phone carrier, a toll-free number is available: 1-877-211-MASS (6277).

### [www.massresources.org](http://www.massresources.org)

Mass. Resources offers a free online resource for Massachusetts residents in need of housing, food, health care, and other basic services.

### [www.worcesterresources.org](http://www.worcesterresources.org)

Worcester Resources offers a free online resource for Massachusetts residents in need of housing, food, health care, and other basic services.

### [www.brainbuildinginprogress.org](http://www.brainbuildinginprogress.org)

State-wide information, resources, and a calendar of activities sponsored by programs funded by the Mass. Dept. of Early Education and Care to support optimal development in young children.

# Table of Contents

Introduction/Acknowledgements .....	i	Family Services: Mental Health .....	33
Early Education and Care .....	1	<i>Emergency/General</i>	
<i>Early Intervention</i> .....	1	Food Assistance.....	34
<i>Head Start</i> .....	1	<i>Farmers Markets</i> .....	34
<i>Local EEC Contacts</i> .....	2	<i>Food Pantries</i> .....	35
<i>Parent/Child Programs</i> .....	3	<i>General Resources</i> .....	36
<i>Play Groups</i> .....	4	<i>Meals</i> .....	37
<i>Resource/Referral/State</i> .....	4	Health Services.....	38
Education/Training .....	5	<i>Clinics/Free Care/Dental</i> .....	38
<i>Adult Educ./ Career Training</i>	5	<i>Emergency</i> .....	38
<i>Colleges/Universities</i> .....	6	<i>General/ HIV-AIDS</i> .....	39
<i>Continuing Education</i> .....	6	<i>Home/Homeless Health Care</i>	40
Education:		<i>Hospitals</i> .....	40
<i>Private Schools</i> .....	7	<i>Housing for Patients' Families</i>	41
<i>Public (Districts &amp; Charters)</i> ..	9	<i>Pregnant Women &amp; Children</i> ..	42
<i>Vocational</i> .....	10	Legal Assistance .....	43
<i>Special Education Programs</i> ...11		Mental Health Services .....	44
Emergency Support: .....	13	<i>Children/Adolescents/Substance Abuse</i>	
<i>General</i> .....	13	<i>Self Help Groups</i> .....	46
<i>Housing/Shelters</i> .....	14	Senior Services .....	47
<i>Utilities</i> .....	15	Special Needs Services .....	49
<i>Violence/Abuse</i> .....	15	<i>Specific Disabilities</i> .....	49
Enrichment/Recreation.....	17	<i>Camps/Equipment</i> .....	49
<i>Adults and Youth Camps</i> .....	17	<i>Early Intervention</i> .....	49
<i>Historical Societies/Commissions</i> ..18		<i>Public School SPED Offices</i> ...	50
<i>Libraries/Literacy Services</i> .....	19	<i>Resources</i> .....	51
<i>Museums</i> .....	20	<i>State Agencies</i> .....	52
<i>Parks &amp; Recreation Depts</i> .....	21	Town Information.....	53
<i>Parks/Farms</i> .....	22	Veterans Services .....	55
<i>Pools</i> .....	23	Appendix	
<i>Service Organizations</i> .....	24	<i>Index of Organizations</i>	
<i>Theatre/Music</i> .....	24		
<i>YMCAs/Youth Programs</i> .....	25		
Family Services .....	28		
<i>Food Assistance/Gernal</i> .....	28		
<i>Grief Support Groups</i> .....	29		
<i>Housing/Shelters</i> .....	30		
<i>Mental Health/Parent/Child Prog</i>	31		
<i>Pregnant Women &amp; Children</i> .....	32		

# Early Education and Care

---

## **Early Intervention**

### **Children's Services**

100 Erdman Way  
Leominster MA 01453  
978-537-3324  
987-537-0956

Serves families with children birth to three years of age; developmental assessments, therapies, children's services.

### **Community Healthlink Lipton Center - Early Intervention**

45 Summer Street  
Leominster MA 01453  
978-534-6116  
800-977-5555

[www.communityhealthlink.org](http://www.communityhealthlink.org)

Early Intervention services for children ages birth - three years; individual, group and family counseling~ comprehensive mental health services.

### **Community Healthlink Lipton Center - Early Intervention**

100 Erdman Way  
Leominster MA 01453  
[www.communityhealthlink.org](http://www.communityhealthlink.org)

Serves families with children birth to three years of age; developmental assessments, therapies, children's services.

### **Criterion Wachusett Early Intervention Program**

31 Lake Street  
Gardner MA 01440  
978-632-4432  
[www.criterioncchild.com](http://www.criterioncchild.com)

Serves families in Ashburnham, Barre, Gardner, Hubbardston, New Braintree, Oakham, Princeton, Templeton, Westminster, and Winchendon with children birth to three years of age; developmental assessments, therapies, children's services.

### **Early Intervention & Family Support Programs UMASS**

POBox 4193  
Shrewsbury MA 01545  
508-856-4202  
[jimmileprouty@umassmed.edu](mailto:jimmileprouty@umassmed.edu)

Serves Holden & Paxton Families with children birth to three years of age; developmental assessments, therapies, children's services

## **Family TIES of Massachusetts**

800-905-8437  
508-792-7880  
[www.massfamilyties.org](http://www.massfamilyties.org)

Early intervention services; information on public benefits and programs, and resources for families of children with special needs and chronic illness.

## **Minuteman ARC for Human Services**

1269 Main Street  
Concord MA 01742  
978-287-7900  
[www.minutemanarc.org](http://www.minutemanarc.org)

Programs include Early Intervention, after school/after work, recreation, camps and adult day services.

## **Head Start**

### **Clinton Head Start Program**

20 W. Boylston Street  
Clinton MA 01510  
978-368-8573  
800-523-6373

### **MOC Child Care and Head Start Services**

133 Prichard Street  
Fitchburg MA 01420  
978-343-0185  
[www.mocinc.org](http://www.mocinc.org)

Hosmer Head Start (Fitchburg): 978-345-8549  
Prichard Street (Fitchburg): 978-343-0185  
Family Education Center (Leominster): 978-534-7642  
Coleman Street Center (Gardner): 978-630-2290  
Mt. Wachusett C. C. (Gardner): 978-632-4664  
Memorial School (Winchendon): 978-297-9832  
CCD Center (Athol): 978-249-6735  
Clinton Head Start (Clinton): 978-368-7121

### **Winchendon Head Start Program**

32 Elmwood Road  
Winchendon MA 01475  
978-297-9832

# Early Education and Care

---

## **Local Early Education & Care (EEC) Contacts**

### **Ashburnham-Westminster Community Partnership for Children**

Westminster Elementary School, 9 Academy Hill Road  
Westminster MA 01473  
978-874-7312  
www.awrsd.org

Provides information and referrals to families. Assists families who need access to financial assistance.

### **Clinton Community Partnerships for Children**

150 School Street  
Clinton MA 01510  
978-365-4218  
www.clinton.k12.ma.us

Provides information and referrals to families; assists families who need access to financial assistance; coordinates professional development for early education and care providers, parenting programs, and numerous family enrichment events.

### **Leominster Project Apples, CFCE**

500 Kennedy Way  
Leominster MA 01453  
978-534-3038

Programs & resources for families with young children; weekly playgroups - call for hours and locations.

### **MOC Community Partnership for Children/Fitchburg**

110 South Street  
Fitchburg MA 01420  
978-345-8549 x 325 or 326  
www.mocinc.org

Provides information and referrals to families. Assists families who need access to financial assistance.

### **MOC Community Partnership for Children/Quabbin**

21 Allen Drive  
Barre MA 01005  
978-355-0266  
www.mocinc.org

Provides information and referrals to families. Assists families who need access to financial assistance.

### **MOC Community Partnership Gardner**

34 Pearly Lane  
Gardner MA 01440  
978-630-3354

Provides information and referrals to families. Assists families who need access to financial assistance.

### **MOC Early Literacy and CFCE**

12 Elm Street  
Baldwinville MA 01436  
(978) 652-5531

Provides information and referrals to families. Assists families who need access to financial assistance.

### **Nashoba Community Partnerships for Children**

50 Mechanic Street  
Bolton MA 01740  
978-799-0539 3012

Provides information and referrals to families; assists families who need access to financial assistance; coordinates professional development for early education and care providers, parenting programs, and family enrichment events.

### **Valuing Our Children Athol/Royalston**

Patch Office: 423 Main Street  
Athol MA 01331  
(978) 249-8467

Provides information and referrals to families. Assists families who need access to financial assistance.

Family Center: 217 Walnut Street

### **Wachusett Coordinated Family & Community Engagement Program**

216 Main Street  
Spencer MA 01562  
508-885-2934  
www.mocinc.org

Provides information and referrals to families. Assists families who need access to financial assistance.

### **Winchendon Community Partnerships for Children**

32 Elmwood Road., Suite A3  
Winchendon MA 01475  
978-297-3436

Provides information and referrals to families. Assists families who need access to financial assistance.

# Early Education and Care

---

## ***Parent/Child Programs***

### **Clinton/Lancaster Parent Child Home Program**

150 School Street, Room 207  
Clinton MA 01510  
978-365-4217  
978-365-4218  
www.clinton.k12.ma.us

Home based early literacy and parenting program for families with children ages 16 months to 4 years.

### **Fitchburg Parent Child Home Program**

356 Broad Street  
Fitchburg MA 01420  
978-345-8549      323

### **Franklin Community Action Corporation**

90 Federal Street  
Greenfield MA 01301  
413-475-1553  
www.communityaction.us

The Franklin County Family Network brings parents together with early childhood educators and other community members to create opportunities for fun and stimulating activities with their children.

### **Leominster Parent Child Home Program**

500 Kennedy Way  
Leominster MA 01453  
978-534-3838  
978-537-3350

Home based early literacy and parenting program for families with children ages 16 months to 4 years.

### **Lunenburg Family , Community Engagement**

1025 Mass Ave  
Lunenburg MA 01462  
978-582-4101      307  
Located @ the TC Passios School

Provides collaborative, comprehensive, high quality family support services that are free of charge, welcoming and accessible to all Lunenburg families with young children (pre-natal through 4 years old). We sponsor weekly playgroups, parenting classes, family activities, and community forums.

### **North Quabbin Family Network, Valuing Our Children**

217 Walnut St.  
Athol MA 01331  
978-249-8467  
978-249-3702  
www.vocathol.org

Family center offering comprehensive services to children and families.

### **North Worcester County Healthy Families**

34 Pearly Ln  
Gardner MA 01440  
978-632-1230  
www.ithappensathome.org

The Healthy Directions program at HealthAlliance Home Health & Hospice is the way to home-based support and education for new young parents in North Worcester County. First-time mothers and fathers who are 20 years old and under and residents of any of the 27 communities we serve, are eligible for Healthy Families Massachusetts (HFM) services.

### **Quabbin Parent Child Home Program**

21 Allen Drive  
Barre MA 01005  
978-355-0266

Home based early literacy and parenting program for families with children ages 16 months to 4 years.



# Early Education and Care

## *Play Groups*

### **Bolton Play Group**

Bolton MA 01740  
pequita.loring@verizon.net

### **Fitchburg Community Partnership**

356 Broad Street  
Fitchburg MA 01420  
978-345-8549 325  
978-345-8549 326  
MOC/Community Partnership  
home base early literacy for children 16mos to 4yrs old

### **Gardner Community Play Group**

35 Pearly Lane  
Gardner MA 01440  
978-630-3354

### **Little Learners Book Club**

35 Pearly Lane  
Gardner MA 01440  
978-630-3354

### **Little Seedlings: Project Apples, CFCE**

500 Kennedy Way  
Leominster MA 01453  
978-534-3838  
978-537-3350

Playgroup for parents/caregivers and children birth through 5 yrs.  
Offered once a week at a variety of locations. Please call the Project Apples office for more information.

### **Play School (Clinton Community Partnerships for Children)**

150 School Street, Room 208  
Clinton MA 01510  
978-365-4218  
www.clinton.k12.ma.us

Play School is a moderately structured early learning program for parents/guardians and children to experience together. Appropriate for families with children ages 0 - 6 years. Primarily for Clinton residents only.

### **Stow Area Parent Network**

P. O Box 398  
Stow MA 01775  
www.sapn.org

### **The Moms Club of Lancaster & Sterling**

Lancaster & Sterling MA 01523  
www.momclub.org

## *Resources & Referrals*

### **Child Care Connection**

31 Harvard Street  
Worcester MA 01609  
508-757-1503  
800-278-1503  
www.cccfscm.org

Child care resource and referral services for selecting child care programs including family child care, child care centers, school age programs, nursery schools, summer camps, in-home care and child care for special needs children

### **Child Care Resources**

1480 John Fitch Highway  
Fitchburg MA 01420  
978-343-7395  
www.masschildcare.org  
www.sevenhills.org

Child care resources and referral services for selecting child care programs including family child care, child care centers, school age programs, nursery schools, in-home care for special needs children, and assists families in obtaining subsidized child care. Also provides training and workshops to early education and care providers/teachers.

### **Child Care Resources**

799 W. Boylston Street  
Worcester MA 01606  
800-952-9183  
508-856-7930

Child care resource and referral services for selecting child care programs including family child care, child care centers, school age programs, nursery schools, in-home care and child care for special needs children

## *State*

### **Mass. Department of Early Education & Care**

51 Sleeper Street, 4th floor  
Boston MA 02210  
617-988-6600  
www.mass.gov/eec

Provides the foundation that supports all children in their development as life long learners and contributing members of the community, and supports families in their essential work as parents and caregivers.

Worcester: 10 Austin St. (508-798-5181)  
Gardner: 31 Lake St., Suite 180 (978-632-4432 x14)  
Springfield: 95 Liberty St., Suite 1124 (413-788-8401)

# Education/Training: Adults

## Adult Education

### ALFA (Adult Learning/Fitchburg Area)

Fitchburg State College, 160 Pearl Street  
Fitchburg MA 01420  
978-665-3706  
www.fsc.edu/alfa

A lifelong learning institute offering non-credit daytime courses in fine arts, science, literature, music, history and other areas.

### Cleghorn Neighborhood Center

2-18 Fairmount Street  
Fitchburg MA 01420  
978-342-2069

Free ESOL/GED/Citizenship classes ongoing throughout the year.

### Clinton Adult Learning Center

150 School Street  
Clinton MA 01510  
978-365-4226  
www.clinton.k12.ma.us

Adult ESOL, ABE, and GED classes.

### Minuteman ARC for Human Services

1269 Main St.  
Concord MA 01742  
978-287-7900  
www.minutemanarc.org

Programs include Early Intervention, after school/after work, recreation, camps and adult day services.

### Mount Wachusett Community College Devens Learning Center

1 Jackson Place, Room 205  
Devens MA 01432  
978-840-3221 x 206  
978-630-9527

English as a second language; beginning or intermediate classes focusing on conversational skills, survival skills, reading and writing; GED preparation; General Education Development leading to high school equivalency diploma.

## Career Training

### Career Center of North Central Massachusetts

25 Main Street  
Gardner MA 01440  
978-632-5050  
508-792-7571  
www.ccncm.com

Whether you recently lost your job, left your job, or are just looking for a better position, the North Central Career Center is here to help you conduct an effective job search.

### Career Center of North Central Massachusetts

100 Erdman Way  
Leominster MA 01453  
978-543-1481  
www.ccncm.com

Our mission is to be the primary link between the Commonwealth's employers and the workforce of North Central Massachusetts. We strive to strengthen this relationship by providing a pool of skilled workers for industry while offering a streamlined process for training and retraining for overall job enrichment.

### Franklin County Community Development Corporation

324 Wells Street  
Greenfield MA 01301  
413-774-7204  
www.fccdc.org

The Franklin County Community Development Corporation (FCCDC) is an economic development non profit organization providing comprehensive business development education, access to capital, commercial office and manufacturing space plus home of the Western Massachusetts Food Processing Center.

### Franklin/Hampshire Career Center

One Arch Place  
Greenfield MA 01301  
413-784-1765  
www.fhcc-onestop.com/

The Franklin Hampshire Career Center supports and promotes workforce and economic development in the region through the delivery of quality employment, training and education services that are responsive to and meet the needs of job seekers and employers.

### North Quabbin School to Careers Partnership

512 Main Street,  
Athol MA 01331  
978-249-0005

School-To-Career is based on the premise that education works best when students can connect their academics to the world of work, their future careers and their daily lives. It encourages high academic achievement, provides high skill development and promotes life-long learning.

# Education/Training: Adults

---

## **Workforce Central Career Center**

44 Front Street , 6th Floor  
Worcester MA 01608  
508-799-1600  
[www.workforcecentralma.org](http://www.workforcecentralma.org)

Our mission is to be the leading public resource in Southern Worcester County for workforce development services and information for all individuals seeking jobs, training and education, as well as for employers seeking skilled workers and workforce development information.

## **Colleges/Universities**

### **Anna Maria College**

50 Sunset Lane  
Paxton MA 01612  
508-849-3300  
[www.annamaria.edu](http://www.annamaria.edu)

Four year private,Catholic, liberal arts college.

### **Fitchburg State University**

160 Pearl Street  
Fitchburg MA 01420  
978-345-2151  
[www.fsc.edu](http://www.fsc.edu)

A public institution providing liberal arts, teacher education and professional majors. Both graduate and undergraduate programs are offered.

### **Mount Wachusett Community College**

444 Green Street  
Gardner MA 01440  
978-632-6600  
[www.mwcc.edu](http://www.mwcc.edu)

MWCC offers several degree and certificate programs. Day and evening classes are available. Also offers noncredit courses, Adult Basic Education, GED preparation, and free workshops on job searching skills.

Devens Campus: 27 Jackson Road (978-630-9569)

Leominster Campus: 100 Erdman Way (978-840-3221) - also offers ABE at this site.

### **N. Quabbin Comm Action Corp**

1645 Main Street  
Orange MA 01364  
978-544-5423  
[www.auc.edu](http://www.auc.edu)

Christian professional college in the Seventh Day Adventist tradition.

## **Continuing Education**

### **Assabet After Dark**

215 Fitchburg Street  
Marlborough MA 01752  
508-263-9651  
800-537-6663      1474  
[www.assabetafterdark.com](http://www.assabetafterdark.com)

Provides more than 220 courses covering everything from using computers to making your own sushi.

### **Montachusett Regional Vocational Technical Continuing Education**

1050 Westminster Street  
Fitchburg MA 01420  
978-345-9200      x 5220  
[www.montytechnites.com/](http://www.montytechnites.com/)

Offers two semesters of evening classes at the vocational technical school. Classes include computer science, languages, medical, business, culinary arts, health and recreation, electrician and

## Education: Private Schools

---

### **Private School**

#### **Applewild**

120 Prospect Street  
Fitchburg MA 01420  
978-342-6053  
www.Applewild.org

Private school for children ages 5 - 15 years.

#### **Browning Elementary / South Lancaster Academy**

PO Box 1129  
South Lancaster MA 01561  
978-368-8544  
www.sla-browning.org

PreK - 12 Christian school.

#### **Cottage Hill Academy**

83 Hospital Road  
Baldwinville MA 01436  
978-652-1100  
www.youinc.org

A staff secured residential program for girls ages 12 - 20.

#### **Cushing Academy**

39 School PO Box 8000  
Ashburnham MA 01430  
978-827-7000  
www.cushing.org

Private coeducational secondary school for grades 9 - 12.

#### **New River Academy**

123 Old Common Road  
Lancaster MA 01523  
781-246-4207

Nonsectarian, alternative, all male private school for grades 9-11.

#### **Notre Dame Preparatory School**

171 South Street  
Fitchburg MA 01420  
978-343-7635

Private, coeducational Roman Catholic high school.

#### **Our Lady of Holy Rosary Elementary School**

99 Nichols Street  
Gardner MA 01440  
978-632-8656  
www.holyrosarynet.com/school.htm

Private PreK - grade 8 school.

#### **Sacred Heart of Jesus Elementary School**

53 Lynde Street  
Gardner MA 01440  
978-632-0950  
www.sacredheartgardner.org

Private K - 8 school.

#### **St. Anna's School**

213 Lancaster Street  
Leominster MA 01453  
978-534-4770  
www.stannaschool.com

Private K - 8 school.

#### **St. Anthony's Elementary School**

123 Salem Street  
Fitchburg MA 01420  
978-345-7785  
www.stanthonyschool.net/

Private parochial PreK - 8 school.

#### **St. Bernard's Central Catholic High School**

45 Harvard Street  
Fitchburg MA 01420  
978-342-3212  
www.stb.echalk.com

Parochial high school.

#### **St. Bernard's Elementary School**

254 Summer Street  
Fitchburg MA 01420  
978-342-1948  
www.stbernardselementary.org

PreK - grade 8 parochial school.

#### **St. Leo's School**

118 Main Street  
Leominster MA 01453  
978-537-1007  
www.stleosparish.org/school.htm

Private, parochial PreK-12 school.

#### **The Village School**

On The Common  
Royalston MA 01368  
978-575-1286  
www.villageschool.to

An independent, nature-based school for grades PreK - 6.

## Education: Private Schools

---

### **Trivium School**

PO Box 597

South Lancaster MA 01561

978-365-4795

[www.triviumschool.com](http://www.triviumschool.com)

Co-educational Catholic day school grades seven through twelve.

### **Wachusett Hills Christian School**

100 Colony Road

Westminster MA 01473

978-874-6432

[www.whchristianschool.org](http://www.whchristianschool.org)

Private Christian elementary school.

### **Winchendon School**

172 Ash Street

Winchendon MA 01475

978-297-1223

[www.winchendon.org](http://www.winchendon.org)

Coeducational secondary college preparatory school.

# Education: Public Schools

---

## *Districts & Charter Schools*

### **Ashburnham-Westminster Regional School District**

11 Oakmont Drive  
Ashburnham MA 01430  
978-827-1434  
www.awrsd.org

Special Education Department: 978-827-3062  
J.R. Briggs Elementary School: 978-827-5750  
Meetinghouse Elementary School: 978-874-0163  
Westminster Elementary School: 978-874-2043  
Overlook Middle School: 978-827-1425  
Oakmont Regional High School: 978-827-5907  
Learning Tree Integrated Preschool: 978-731-9916

### **Athol Royalston Public School District**

PO Box 9681062 Pleasant Street  
Athol MA 01331  
978-249-2400  
www.arrsd.org

Royalston Community School: 978-249-2900  
Sanders Street School: 978-249-2410  
Riverbend School: 978-249-2415  
Pleasant Street School: 978-249-2405  
Athol-Royalston Middle School: 978-249-2430  
Athol High School: 978-249-2435  
Special Education: 978-249-2403

### **Ayer Shirley Regional Public Schools**

141 Washington St.  
Ayer MA 01432  
978-772-8600  
www.asrsd.org

PreK - Grade 12 Regional Public School District  
Lura A. White Elementary School: 978-425-2630  
Shirley Middle School: 978-425-2630

### **Clinton Public Schools**

150 School Street  
Clinton MA 01510  
978-365-4200  
www.clinton.k12.ma.us

Clinton Elementary School: 978-365-4230  
Clinton Middle School: 978-365-4220  
Clinton High School: 978-365-4208  
Special Needs Dept.: 978-365-4238

### **Fitchburg Public Schools**

376 South Street  
Fitchburg MA 01420  
978-345-3200  
www.fitchburg.k12.ma.us

Fitchburg High School: 978-345-3240  
Memorial Middle School: 978-345-3495  
Longso Middle School: 978-343-2146  
Crocker Elementary School: 978-345-3290  
McKay Campus School: 978-665-3187  
Fitchburg Arts Academy: 978-665-3662  
Reingold Elementary School: 978-345-3287  
South Street School: 978-348-2300  
Fitchburg Evening Alternative Education 978-345-3244  
Special Education: 978-345-3211

### **Francis W. Parker Charter Essential School**

49 Antietam Street  
Devens MA 01434  
978-772-3293  
www.parker.org

A public charter school for grades 7-12, open to Massachusetts residents.

### **Gardner Public Schools**

70 Waterford Street  
Gardner MA 01440  
978-632-1000  
www.gardnerk12.org

Gardner High School: 978-632-1600  
Gardner Middle School: 978-632-1603  
Elm Street School: 978-632-1673  
Helen Mae Sauter Elementary: 978-632-5480  
Waterford Street School: 978-632-1605  
Special Education Office: 978-630-4076

### **Leominster Public Schools**

24 Church Street  
Leominster MA 01453  
978-534-7700  
www.leominster.mec.edu

Fall Brook School: 978-534-7745  
Bennett School: 978-534-7704  
Priest Street School : 978-534-7761  
Johnny Appleseed: 978-534-7765  
Northwest School : 978-534-7756  
Southeast School: 978-534-7751  
Samoset School: 978-534-7725  
Sky View Middle School: 978-534-7780  
Leominster Senior High School: 978-534-7715  
Leominster Ctr Tech Educ: 978-534-7735  
Special Education Office: 978-534-7700

## Education: Public Schools

---

### **Narragansett Regional Public Schools**

462 Baldwinville Road  
Baldwinville MA 01436  
978-939-5661  
www.nrsd.org

Baldwinville Elementary: 978-939-5318  
Phillipston Memorial School: 978-249-4969  
East Templeton School: 978-632-0557  
Narragansett Middle School: 978-939-5928  
Narragansett Regional High School: 978-939-5388  
Templeton Center School: 978-939-8892

### **Nashoba Regional Schools**

50 Mechanic Street  
Bolton MA 01740  
978-779-0539      3002  
www.nrsd.net

Pompositticut School: 978-897-5774  
Mary Rowlandson Elementary: 978-368-8482  
Center School: 978-897-0290  
Florence Sawyer School: 978-779-2821  
Luther Burbank Middle School: 978-365-4558  
Hale Middle School: 978-897-4788  
Nashoba Regional High School: 978-779-2257  
Special Education Office: 978-779-0539  
Extended Day Program: 978-779-9875

### **Quabbin Public School District**

872 South Street  
Barre MA 01005  
978-355-4668  
www.qrsd.org

Quabbin Regional High School: 978-355-4651  
Quabbin Regional Middle School: 978-355-5042  
Harwick Elementary school: 413-477-6351  
Hubbardston Center School: 978-928-4487  
Ruggles Lane School: 978-355-2934  
Oakham Center School: 978-882-3392  
Special Needs: 978-355-4668

### **Sizer School, a North Central Charter Essential School**

500 Rindge Road  
Fitchburg MA 01420  
978-345-2701  
www.ncces.org

A public charter school for grades 7-12, open to Massachusetts residents.

### **Wachusett Regional School District**

1745 Main Street  
Jefferson MA 01522  
508-829-1670  
www.wrsd.net

Central Tree Middle School (Rutland) 508-886-0073  
Chocksett Middle School (Sterling) 978-422-6552  
Davis Hill Elementary (Holden) 508-829-1754  
Dawson Elementary (Holden) 508-829-6828  
Glenwood Elementary (Rutland) 508-886-0399  
Houghton Elementary (Sterling) 978-422-2333  
Mayo Elementary (Holden) 508-829-3203  
Mountview Middle (Holden) 508-829-5577  
Naquag Elementary (Rutland) 508-886-2901  
Paxton Center School (Paxton) 508-798-8576  
Thomas Prince School (Princeton) 978-464-2110  
Wachusett Regional High School (Holden) 508-829-6771

### **Winchendon Public Schools**

175 Grove Street  
Winchendon MA 01475  
978-297-0031  
www.winchendonk12.org

Winchendon Preschool Program: 978-297-3436  
Memorial School: 978-297-1305  
Toy Town Elementary: 978-297-2005  
Murdock Middle/High School: 978-297-1256  
Special Education: 978-297-1850

## ***Vocational***

### **Assabet Valley Regional Technical High School**

215 Fitchburg Street  
Marlborough MA 01752  
508-485-9430  
www.assabettech.com/

Public vocational/technical high school for grades 9 - 12.

### **Baypath Regional Vocational School**

57 Old Muggett Hill Road  
Charlton MA 01507  
508-248-5971  
www.baypath.tec.ma.us

Vocational Technical High School Grades 9-12

### **Montachusett Regional Vocational Technical School**

1050 Westminster Street  
Fitchburg MA 01420  
978-345-9200  
www.montytech.net

A four year vocational-technical high school serving north central MA.

# Education: Special Education Programs

---

## *Special Needs*

### **Caldwell Alternative School**

44 Wanoosnoc Road  
Fitchburg MA 01420  
978-345-5250  
www.fillac.org

Local collaborative school serving special education students.

### **Caldwell Elementary School**

1025 Massachusetts Ave.  
Lunenburg MA 01462  
978-582-4206  
www.fillac.org

Public/private day program serving students with significant emotional and behavioral concerns in grades K-6.

### **CAPS Alternative Jr. Sr. High**

53 School Street  
Gardner MA 01440  
978-632-2208  
www.capsped.org

Local collaborative school serving special education students.

### **CAPS Deaf/Hard of Hearing Program (DHHP)**

Westminster Elementary School  
Westminster MA 01473  
978-424-8013  
www.capsped.org

Local collaborative school (PreK - High School). Classes are available for students with moderate to profound hearing loss. Services range from self-contained classrooms using total communication and A.S.L. to partial or full inclusion with interpreters. Fitchburg Site: Memorial Middle School

### **CAPS Educational Collaborative**

53 School Street  
Gardner MA 01440  
978-632-2208  
www.capsped.org

Local collaborative school serving special education students.

### **CAPS Gateway**

53 School Street  
Gardner MA 01440  
978-632-2208  
www.capsped.org

Local collaborative school serving special education students.

### **CAPS Horizons I**

9 Academy Hill  
Westminster MA 01473  
978-503-4026  
www.capsped.org

Local collaborative elementary school for children having moderate to severe developmental disabilities, substantial communication disorders, and/or pervasive developmental disorders with needs in areas of communication, attention, behavior, and academic learning.

### **CAPS Horizons II**

Ralph C. Mahar Regional School  
507 South Main St.  
Orange MA 01364  
978-544-2542  
www.capsped.org

Local collaborative school serving special education students.

### **CAPS Odyssey**

53 School Street  
Gardner MA 01440  
978-630-3253  
www.capsped.org

Local collaborative school. Adolescent day treatment program that integrates educational and therapeutic services for teens with severe mental health issues.

### **CAPS Rainbow**

53 School Street  
Gardner MA 01440  
978-632-2208  
www.capsped.org

Local collaborative preschool, elementary, and secondary education for students (ages 3 - 22 years) with significant multiple disabilities.

### **CAPS Sr. Pathways**

Gardner High School  
Gardner MA 01440  
978-633-7226  
www.capsped.org

Program for students ages 15 - 22 years with moderate to severe disabilities.

### **Devereux School**

60 Miles Road  
Rutland MA 01543  
508-886-4746  
www.devereux.org

Private, not-for-profit school serving children and adolescents with special emotional and behavioral needs.



# Education: Special Education Programs

---

## **Dr. Franklin Perkins School**

971 Main Street  
Lancaster MA 01523  
978-365-7376  
[www.perkinschool.org](http://www.perkinschool.org)

Serves children and adolescents with a range of psychiatric, social, emotional, and executive functioning issues.

## **Eagle Hill School**

PO Box 116, 242 Old Petersham Rd.  
Hardwick MA 01037  
413-477-6000  
[www.ehs1.org](http://www.ehs1.org)

Private, co-educational college preparatory boarding school for students with learning disabilities in grades 8-12.

## **Ellen Bigelow School**

129 Allen Street  
Athol MA 01331  
978-249-2403

Special education school that serves 29 students in grades 1-12.

## **FLLAC Collaborative**

2 Shaker Road, Suite B210  
Shirley MA 01464  
978-425-0310  
[www.fllac.org](http://www.fllac.org)

Local collaborative serving 10 school districts in N. Central Mass. by providing high quality, cost effective, educationally related programs and services.

## **Lipton Academy School**

100 Erdman Way  
Leominster MA 01453  
978-537-3324  
[www.CommunityHealthlink.org](http://www.CommunityHealthlink.org)

Special education school for grades 8 -12.

## **RFK Lancaster School**

220 Old Common Road  
Lancaster MA 01523  
978-365-2803  
[www.rfkchildren.org](http://www.rfkchildren.org)

Special education program of males in grades 5 - 12.

## **Stetson School**

445 South Street  
Barre MA 01005  
978-355-4541  
[www.stetsonschool.org](http://www.stetsonschool.org)

Residential treatment center for males age 9-21 with sexual behavior problems.

# Emergency Support

---

## General

### American Red Cross

114 Merriam Avenue  
Leominster MA 01453  
800-207-4444

Provides a variety of emergency services following natural disasters.

### American Red Cross

2000 Century Pr.  
Worcester MA 21606  
508-595-3700  
www.redcross.org

### Care Service Project

326 Nicholas Rd, Suite 11  
Fitchburg MA 01420  
978-345-4366

Programs for people & families with HIV/AIDS

### Catholic Charities

196 Mechanic Street  
Leominster MA 01453  
978-840-0696

Food Distribution: Monday - Friday, 8AM to 5 PM

### Catholic Charities, Refugee Resettlement Program

10 Hammond Street  
Worcester MA  
508-798-0191

### Christ Episcopal Church

499 Vernon Avenue  
South Barre MA 01704  
978-355-4061

Food Distribution: 2nd Wed. of each month

### Community Services of SDA

129 Bolton Road  
Lancaster MA 01561  
978-365-7152

Food Distribution: Tuesdays, 9 AM to 12 PM

### Distrigas Application

866-427-9918  
www.massresources.org

For those who heat with natural gas and need emergency assistance.

### Gardner Community Action Committee

294 Pleasant Street, 3rd Floor  
Gardner MA 01440  
978-632-8700

Food Distribution Mon - Fri, 9 AM to 12 PM. Tuesdays, 1 to 4 PM

### GVNA Community Services

35 Main Street  
Fitchburg MA 01420  
978-664-9078

Food Distribution: Weds. 2-4 PM  
HIV counseling and testing.

### Jewish Family Services of Metrowest

475 Franklin Street, Suite 101  
Framingham MA 01702  
508-875-3100

### Lutheran Social Services of New England

50 Union Street  
Worcester MA 01609  
www.lssne.org

Refugee and immigrant services are available.

### Mass. Department of Transitional Assistance

143 Munson Street, Unit 3  
Greenfield MA 01301  
413-772-3400  
www.ma.gov

The mission of the Department of Transitional Assistance is to assist low-income individuals and families to meet their basic needs, increase their incomes, and improve their quality of life.

Fitchburg: 473 Main Street, 978-665-8700  
Worcester: 9 Walnut Street, 508-767-3100

### Massachusetts Alliance of Portuguese Speakers

340 Main Street, Suite 23  
Framingham MA 01702  
www.maps-inc.org

Provides assistance to Portuguese speaking individuals and families.

### Refugee and Immigrant Assistance Center

340 Main Street, Suite 965  
Worcester MA 01608  
508-756-7557

Support service for recent immigrants in Central MA.

# Emergency Support

---

## **Salvation Army Corps & Community Centers**

107 Ridge Street  
Athol MA 01331  
978-249-8111

Fitchburg: 739 Water Street (978-345-4155)

## **St Vincent De Paul Society - Sacred Heart Church**

166 Cross Street  
Gardner MA 01440  
978-632-0237

Food Distribution: Weekdays 10 AM 5 PM. Call for an appointment

## **Urban Missionaries of Our Lady of Hope**

27 Chandler Street  
Worcester MA 01604  
508-831-7455  
[www.urbanmissionaries.com](http://www.urbanmissionaries.com)

Catholic social action ministry of the Diocese of Worcester.

## **WHEAT/United Way Community Services**

500 Main Street, Ste. 203  
Clinton MA 01510  
978-365-6349 4942  
[www.uwotc.org/WHEAT](http://www.uwotc.org/WHEAT)

Serves low-to-moderate income residents of Berlin, Bolton, Clinton, Lancaster, and Sterling by providing critical services during their time of need.

## **Winchendon Community Action Council**

273 Central Street  
Winchendon MA 01475  
978-297-1667

Distribution: Monday through Friday, 11:30 AM to 2:30 PM

## **Housing/Shelters**

### **Department of Housing and Community Development**

Worcester MA 01610  
508-767-3100

Emergency housing assistance for eligible families.

### **Friendly House Shelter**

87 Elm Street  
Worcester MA 01609  
508-792-1799

Short term shelter for homeless families with children. Open 24/7

### **Horizons for Homeless Children**

17 Orchard Street  
Leominster MA 01453  
508-755-2615  
[www.horizonsforhomelesschildren.org](http://www.horizonsforhomelesschildren.org)

Provides nurturing, stimulating opportunities for early education and play and connects parents with the tools and resources needed to end the cycle of homelessness and achieve self-sufficiency

### **Lutheran Community Services of Southern New England, Inc.**

20 Hamilton St.  
Worcester MA 01604  
508-791-4488

Complete services for birth parents and adoptive families including home study, counseling, legal assistance, placement and post-placement services, foster care & refugee placement

### **Massachusetts Department of Children & Families**

340 Main Street  
Worcester MA 01608  
508-929-2000

Adoption services for children who are wards of the state. Home studies.

### **Montachusett Interfaith Hospitality Network**

923 Main Street  
Fitchburg MA 01420  
978-342-9501  
[www.mihnetwork.com](http://www.mihnetwork.com)

We provide families with children a temporary place to call home. Volunteers prepare meals, provide supervision, and lend a supportive hand to families.

### **People In Peril Shelter**

701 Main Street  
Worcester MA 01610  
508-757-8332

Co-ed shelter and soup kitchen

# Emergency Support

---

## Utilities

### Energy & Environmental Services MOC

66 Day Street  
Fitchburg MA 01420  
978-342-7025

### Fuel Assistance/Low Income Heating Assistance

473 Main Street, 3rd Floor  
Fitchburg MA 01420

Provides eligible households help with winter heating bills

### Good Neighbor Energy Fund

800-334-3047

Provides energy assistance to hundreds of thousands of residents in temporary crisis who are struggling to pay their energy bills.

### New England Farm Workers Council (NEFWC)

473 Main St., 3rd floor  
Fitchburg MA 01420  
978-342-4520  
[www.partnersforcommunity.org](http://www.partnersforcommunity.org)

Assists migrant and seasonal workers and their families.

### North Quabbin Energy

100 Main Street  
Athol MA 01331  
[www.northquabbinenergy.org](http://www.northquabbinenergy.org)

North Quabbin Energy is an informal group of people in north-central Massachusetts who are seek to educate ourselves and our neighbors about the true social and environmental costs of our current energy consumption patterns. We also work to find ways of changing our individual and collective habits of energy use through conservation, use of renewable fuels, and support for local and regional enterprises that reduce our dependence on imported resources.

## Violence/Abuse

### Battered Women's Resources, Inc.

PO Box 2503  
Fitchburg MA 01420  
508-630-1031  
508-368-1311

Support for women and their children involved in domestic violence situations

### Battered Women's Resources, Inc.

Leominster MA 01453  
978-537-2306  
978-537-8601

Domestic violence education, awareness, support groups, counseling, shelter, court advocacy/outreach.

### Battered Women's Shelter & Support

Clinton MA 01510  
978-368-0720

Support for women and their children involved in domestic violence situations

### Battered Women's Shelter & Support

Gardner MA  
978-632-4424

Support for women and their children involved in domestic violence situations

### Battered Women's Shelter & Support

Winchendon MA 01475  
978-297-3049

Support for women and their children involved in domestic violence situations

### Battered Women's Shelters and Services

508-755-9030  
24 HOUR Crisis Line

### Childhelp USA National Child Abuse Hotline

800-4AC-HILD

The Child Abuse Hotline provides crises counseling and referral to any caller in a n abuse-related situation.

### Community Healthlink/Worcester Youth & Family Services

275 Belmont Street  
Worcester MA 01604-1693  
508-791-3261

# Emergency Support

---

## **Daybreak Resources for Women and Children, Inc**

945 Main Street, PO Box 925  
Worcester MA 01610  
508-755-9030  
508-755-5371  
HOTLINE all hours: 508-755-9030

## **Domestic Violence Ended (Dove) Youth Hotline**

617-471-1234  
888-314-3683  
www.doveinc.prg

DOVE'S Hotline is for individuals & families to talk about domestic violence issues and receive support and referral.

## **Domestic Violence Shelter & Support Hot Line**

800-899-4000

## **Enough Abuse/Mass. Citizens for Children (MassKids)**

14 Beacon Street, Suite 706  
Boston MA 02108  
(617) 742-8555  
www.masskids.org

MassKids currently works to prevent child abuse through the work of the Shaken Baby Syndrome Prevention Center and the soon to be launched "Choose Your Partner Carefully" project. It leads the Enough Abuse Campaign - a multi-state initiative working to educate and mobilize parents, professionals and communities to prevent child sexual abuse.

## **Mass. Department of Children and Families (DCF)**

690 Mechanic St.  
Leominster MA 01453  
978-466-1500  
800-479-6111

24 HOUR HOTLINE:800-922-8169 Twenty four hour hotline to report cases of suspected child abuse or neglect. DSS investigates all reports. Services include adoption, foster care and protective services.

## **Mass. Society for the Prevention of Cruelty to Children (MSPCC)**

76 Summer Street  
Fitchburg MA 01420  
800-442-3035  
www.mspcc.org

Community and family life, education/training; also provides information and education to professionals, parents and the general public aimed at improving knowledge and skills in child abuse prevention, detection, intervention, and positive parenting.

## **Mass. Society for the Prevention of Cruelty to Children (MSPCC)**

335 Chandler Street  
Worcester MA 01602  
508-753-2967  
800-442-3035

Mental health counseling, home-based family counseling, sexual abuse counseling for children, adults and families. Child abuse prevention programs, adult survivor groups. HELPNET: after hours emergency telephone support services.

## **National Domestic Violence Hot Line**

800-799-7233  
800-799-SAFE

## **Parent & Children's Services/ Parental Stress Line**

800-632-8188  
800-882-1250

A statewide network of support groups for parents who want to improve their relationships with their children. Weekly meetings are free, confidential, ongoing & open to parents/other caregivers who feel isolated, overwhelmed or afraid of their anger towards their children, Groups meet locally. Call for days & times.

## **Rape Crisis Center**

285 Nichols Rd  
Fitchburg MA 01402  
978-343-5683  
508-852-7600

Counseling services;  
24 hour crisis intervention hotline (Spanish & English): 800-870-5905  
STATEWIDE HOTLINE 800-223-5001 (24 hrs.)

## **Rape Crisis Center, Central MA**

588 Main Street  
Worcester MA 01608-2014  
800-870-5905

A site is also available in Fitchburg, MA. Call office number for details.

## **YOU, Inc.**

81 Plantation Street  
Worcester MA 01604  
508-849-5600  
978-632-2321  
www.youinc.org

Full range of therapy and assessment services to children and families for family violence, sexual abuse, incest and other issues

# Enrichment/Recreation

---

## Adults

### Adult Mixed Softball Association

PO Box 1027  
Leominster MA 01453  
978-840-6419  
[www.eteamz.com/lamsasoftball](http://www.eteamz.com/lamsasoftball)  
Contact Phil Davis. Meets at Fournier Park, 525 Litchfield Street, Leominster.

### Central MA Basketball

[www.abbasketball.com](http://www.abbasketball.com)  
Contact Scott Davidson.

### North Central Basketbal

Contact Mike Davidson: [Miked0109@verizon.net](mailto:Miked0109@verizon.net)

### Semi Pro Baseball

978-342-3458  
Contact Phil Manooshian.

## Camps

### Camp Harrington

320 Sewall ST  
Boylston MA 01505  
508-869-0586  
508-869-6171  
[slockney@ymcaofcm.org](mailto:slockney@ymcaofcm.org)  
Inclusive day camp for children ages 5-14 yrs.

### Camp Kidoodles

659 Shrewsbury Street  
Holden MA 01520  
508-595-9977  
PreK - 12 yrs

### Camp Putnam

141 Rutherford Rd.  
New Braintree MA 01531  
508-867-6895  
Residential sliding scale 6-12 yrs.

### Camp Sabra PreK

633 Salisbury Street  
Worcester MA 01606  
508-756-7109

### Cricket Corner Camp/Orchard Hills Athletic Club

100 Duval Road  
Lancaster MA 01523  
978-537-8387 x 137  
[www.orchardhillsathleticclub.com](http://www.orchardhillsathleticclub.com)  
Day camp for children ages 5-14 yrs.

### Davis Farmland/Junior Farmer Day Camps

Redstone Hill Road  
Sterling MA 01564  
978-422-6666  
[www.davisfarmland.com](http://www.davisfarmland.com)  
Camp for children ages 4-8 yrs.

### Mass Audubon Sanctuary Camps

Massasoit Road  
Worcester MA  
508-753-6087  
978-422-7655  
[www.massaudubon.org](http://www.massaudubon.org)  
Day camp for children ages 5-14 yrs.

## Enrichment/Recreation

---

### *Historical*

#### **Ashburnham Historical Society**

P.O. Box 692, 70 Main Street  
Ashburnham MA 01430  
978-827-4005  
867-827-6639  
ahs@ashburnhams.org

#### **Barre Historical Society**

P.O. Box 755, 18 Common Street  
Barre MA 01005  
978-355-4978  
www.barrelibrary.org/Pages/hsociety.html

#### **Bolton Historical Society**

676 Main St.  
Bolton MA 01740  
978-779-6392  
www.boltonhistoricalsociety.org

#### **Clinton Historical Society**

210 Church Street  
Clinton MA 01510  
978-368-0084  
www.clintonhistorical.org  
Open Saturdays, 9 am - 12 noon

#### **Fitchburg Historical Society**

781 Main Street  
Fitchburg MA 01420  
978-345-1157  
www.fitchburghistory.fsc.edu

#### **Lancaster Historical Commission**

Lancaster Town Hall (695 Main St.)  
Lancaster MA 01523  
978-368-1162

#### **Leominster Historical Society**

17 School Street  
Leominster MA 01453  
978-537-5424  
www.leominsterhistorical.org

Provides exhibits and programs commemorating the history of Leominster including many items depicting the history of the plastics industry which flourished in Leominster for many years.

#### **Stow Historical Commission**

Stow Town Hall (375 Great Rd.)  
Stow MA 01775  
978-897-4514  
978-897-2540  
info@stowhistoricalsociety.org  
P.O. BOX 40

#### **Westminster Historical Commission**

Town Hall, South Street  
Westminster MA 01473  
978-874-7406

A town board responsible for ensuring that preservation concerns are considered in town planning and development decisions.

#### **Westminster Historical Society**

P.O. Box 177, 110 Main Street  
Westminster MA 01473  
978-874-5569  
www.WestminsterHistory.org

A non-profit, membership based organization that collects, preserves, interprets and makes accessible the history of Westminster. Offers monthly programs, a gift shop and collection of artifacts.

#### **Winchendon Historical Society**

151 Front Street  
Winchendon MA 01475  
978-297-2142  
www.winchendonhistoricalsociety.org

# Enrichment/Recreation

---

## ***Libraries/Literacy Services***

### **Audio Journal**

799 West Boylston Street  
Worcester MA 01606  
508-797-1117  
[www.audiojournal.net](http://www.audiojournal.net)

This non-profit agency offers daily newspaper reading for those who are blind or unable to hold printed material and special receivers at no charge.

### **Beals Memorial Library**

50 Pleasant Street  
Winchendon MA 01475  
978-297-0300  
[www.winchendonlibrary.org](http://www.winchendonlibrary.org)

Public library offering reading materials as well as children's story hours, museum passes and discount coupons for area attractions, internet access and interlibrary loans.

### **Bigelow Free Public Library**

54 Walnut Street  
Clinton MA 01510  
978-365-4160  
[www.bigelowlibrary.org](http://www.bigelowlibrary.org)

Providing a public library which is part of a larger network of Massachusetts community libraries. Provides many literacy events throughout the year.

### **Fitchburg Public Library**

610 Main Street  
Fitchburg MA 01420  
978-345-9635  
[www.fitchburgpubliclibrary.org](http://www.fitchburgpubliclibrary.org)

Public library offering reading materials as well as children's story hours, book clubs, internet access and interlibrary loans.

### **Forbush Memorial Library**

118 Main Street, P.O. Box 468  
Westminster MA 01473  
978-874-7416  
[www.forbushlibrary.org](http://www.forbushlibrary.org)

Public library offering reading materials as well as children's story hours, book clubs, internet access and interlibrary loans.

### **Leominster Public Library**

30 West Street  
Leominster MA 01453  
978-534-7522

Providing a public library which is part of a larger network of Massachusetts community libraries. Provides many literacy events throughout the year.

### **Levi Heywood Memorial Library**

55 West Lynde Street  
Gardner MA 01440  
978-632-5298  
[www.gardner-ma.gov/pages/gardnerMA\\_library](http://www.gardner-ma.gov/pages/gardnerMA_library)

Public library offering reading materials as well as children's story hours, book clubs, internet access and interlibrary loans.

### **Literacy Volunteers of Massachusetts**

8 Market Street  
Boston MA 02108  
888-466-1313  
617-367-1313  
[www.lvm.org](http://www.lvm.org)

LVM trains volunteers to provide free, confidential and individualized tutoring to adults in basic literacy and in English to speakers of other languages. Services are available throughout the Commonwealth.

### **Massachusetts Adult Literacy Hotline**

800-447-8844  
[www.sabes.org/hotline](http://www.sabes.org/hotline)

Provides referrals to over 300 adult education programs that offer tutoring, small group or classroom instruction to adult learners. Also offers information on GED preparation and testing sites.

### **Stevens Memorial Library**

20 Memorial Drive  
Ashburnham MA 01430  
978-827-4115  
[www.ashburnhamlibrary.org](http://www.ashburnhamlibrary.org)

Public library offering reading materials as well as children's story hours, book clubs, internet access and interlibrary loans.

### **Thayer Memorial Library**

717 Main Street  
Lancaster MA 01523  
978-368-8928  
[www.thayermemoriallibrary.org](http://www.thayermemoriallibrary.org)



# Enrichment/Recreation

---

## Museums

### Currier Museum of Art

201 Myrtle Way  
Manchester NH 03104  
603-669-6144  
www.currier.org

A small museum with permanent and changing exhibitions that includes a house designed by famed architect Frank Lloyd Wright.

### DeCordova Museum and Sculpture Park

51 Sandy Pond Road  
Lincoln MA 01773  
781-259-8355  
www.decordova.org

Contemporary art exhibit and outdoor sculpture park.

### Discovery Museums of Acton

177 Main Street, Route 27  
Acton MA 01720  
978-264-4200  
www.discoverymuseums.org

Two complementary museums filled with hands-on activities for children.

### Eco Tarium

222 Harrington Way  
Worcester MA 01604  
508-929-2700  
www.ecotarium.org

Indoor-outdoor museum of science and nature. Includes a planetarium wildlife, nature trails, tree top tour, railroad, and hands-on family friendly exhibits.

### Eric Carle Museum of Picture Book Art

125 West Bay Road  
Amherst MA 01002  
413-658-1100  
www.picturebookart.org

A museum celebrating picture book art from around the world, including art by Eric Carle, author of "The Very Hungry Caterpillar"

### Fitchburg Art Museum

25 Merriam Pkway  
Fitchburg MA 01420  
978-345-4207  
www.fitchburgartmuseum.org

A family friendly museum with 12 galleries of paintings, prints, sculptures as well as Egyptian, Greek, Roman and Asian antiquities. Also offers changing exhibits, tours, lectures, and classes for adults and children.

### Frederick Historical Piano Collection

30 Main Street  
Ashburnham MA 01430  
978-827-6232  
www.frederickcollection.org

A collection of 20 original pianos from 1790-1907 in playing condition. Tours and concerts are offered.

### Fruitlands Museum

102 Prospect Hill Road  
Harvard MA 01451  
978-456-3924  
www.fruitlands.org

The historic home of the Alcott family is now a scenic museum with art galleries and native American artifacts. Hiking trails, summer concerts, and a restaurant, are also offered.

### Gallery of African Art

62 High Street  
Clinton MA 01510  
978-368-0227  
www.galleryofafricanart.org

The Gallery of African Art serves as both a traditional exhibit of art and an interactive educational center.

### Museum of Russian Icons

203 Union Street  
Clinton MA 01510  
978-598-5000  
www.museumofrussianicons.org

A collection of 370 Russian icons spanning 6 centuries.

### The Gardner Museum

28 Pearl Street  
Gardner MA 01440  
978-632-3277  
www.thegardnermuseum.com

Offers exhibits of furniture manufacturing, silver smithing, and other collections relevant to local history.

### Top Fun Aviation Toy Museum

21 Prichard Street  
Fitchburg MA 01420  
978-342-2809  
www.topfunaviation.com

Toy museum devoted to aviation-related toys.

# Enrichment/Recreation

---

## **Wallace Civic Center**

John Fitch Highway  
Fitchburg MA 01420  
978-345-7593  
[www.wallaceciviccenter.com](http://www.wallaceciviccenter.com)

An educational and recreational institution with two ice rinks and a planetarium.

## **Worcester Art Museum**

55 Salisbury Street  
Worcester MA 01606  
508-799-4406  
[www.worcesterart.org](http://www.worcesterart.org)

Considered to be one of the best small museums in the country; offers a variety of paintings, mosaics, classes, and more.

## ***Parks & Recreation Departments***

### **Bolton Parks and Recreation**

663 Main Street  
Bolton MA 01740  
[www.townofbolton.com](http://www.townofbolton.com)

### **Clinton Parks and Recreation**

560 High Street  
Clinton MA 01510  
978-365-4140  
[www.clintonrec.com](http://www.clintonrec.com)

### **Clinton Parks and Recreation Department**

560 High Street  
Clinton MA 01510  
978-365-4140  
[www.clintonrec.com](http://www.clintonrec.com)

### **Fitchburg Recreation Department**

City Hall  
Fitchburg MA 01420  
978-345-4572  
[www.FitchburgRecreation.org](http://www.FitchburgRecreation.org)

The City of Fitchburg maintains many parks and playgrounds throughout the city.

### **Fitchburg Recreation Department**

301 Broad Street, 2nd floor  
Fitchburg MA 01420  
(978) 829-1815  
[www.ci.fitchburg.ma.us/government/departments](http://www.ci.fitchburg.ma.us/government/departments)

### **Leominster Recreation Department**

40 Barrett Parkway  
Leominster MA 01453  
978-534-7529

### **Sterling Recreation Department**

31 Main Street  
Sterling MA 01564  
(978) 422-3041  
(978) 422-0289  
[www.sterling-ma.gov](http://www.sterling-ma.gov)

# Enrichment/Recreation

---

## ***Parks/Farms***

### **Anascomet Beach**

Route 68  
Hubbardston MA 01452  
978-632-7897

127 acre pond with boat ramp and beach offers fishing and swimming. Passes are required for beach use.

### **Ashburnham Conservation Trust**

P.O. Box 354  
Ashburnham MA 01430  
978-827-6427  
[www.Ashburnhamconservationtrust.org](http://www.Ashburnhamconservationtrust.org)

ACT's mission is to protect the natural landscape, ecological diversity and rural heritage of the area by conserving open space, as well as providing education.

### **Barre Falls Dam**

P.O. Box 519  
Hubbardston MA 01452  
978-928-4712  
[www.nae.usace.army.mil](http://www.nae.usace.army.mil)

Public area offering canoeing, bike riding, picnicking, hunting, fishing, hiking, cross county skiing, and wildlife observation

### **Bolton Conservation Trust**

P O BOX 14  
Bolton MA 01740  
978-429-3004  
[info@boltonconversationtrust.org](mailto:info@boltonconversationtrust.org)

Offers many family programs to connect with Bolton's natural world including nature walks, workshops, and the Tom Denney Nature Camp.

### **Coggs Hall Park**

off Electric Avenue  
Fitchburg MA 01420

A recreation area featuring a playground, softball field, walking trails and lake with swans and ducks.

### **Coolidge Park**

John Fitch Highway  
Fitchburg MA 01420

A park with five baseball/softball fields, a swimming pool with toddler area, walking path, soccer fields, street hockey rinks, play structure and beach volleyball court.

### **Crocker Pond Beach and Recreation Area**

South Street  
Westminster MA 01473  
978-874-7405  
[www.westminster-ma.org/CrockerPond](http://www.westminster-ma.org/CrockerPond)  
Open to Westminster residents.

### **Crow Hill/Leominster State Forest**

90 Fitchburg Road  
Westminster MA 01473  
978-874-2303

This state forest offers swimming, picnicking, hiking and mountain biking in the summer and cross country skiing and snowmobiling in the winter. Parking fees are charged.

### **Davis Farmland**

145 Redstone Hill Road  
Sterling MA 01564  
978-422-8888  
[www.davisfarmland.com](http://www.davisfarmland.com)

### **Dunn Pond State Park**

Route 1rt 101/ 289 Pearl Street  
Gardner MA 01440  
978-632-7897  
[www.mass.gov/dcr/parks/central/dunn.htm](http://www.mass.gov/dcr/parks/central/dunn.htm)  
Swimming and hiking available; handicap accessible.

### **Gardner Heritage State Park**

26 Lake Street  
Gardner MA 01440  
978-632-7897  
[www.mass.gov/dcr/forparks](http://www.mass.gov/dcr/forparks)  
Self-guided exhibits tracing the silversmith and furniture making industries in the "Chair City."

### **Hager Park**

Route 140  
Westminster MA 01473  
978-874-7414  
[www.HagerPark.com](http://www.HagerPark.com)  
57 acres with hiking and riding trails.

### **Lake Dennison Recreation Area**

Route 202  
Winchendon MA 01475  
978-939-8962  
[www.massparks.org](http://www.massparks.org)

This state park has hiking trails, swimming beaches, mountain bike trails and 151 campsites. Parking fee.

## Enrichment/Recreation

---

### **Marshall Farm**

340 Marshall Road  
Fitchburg MA 01420  
978-343-6255  
info.marshallfarm.com

### **Midstate Trail**

[www.midstatetrail.org](http://www.midstatetrail.org)

A 92 mile hiking trail through Central Massachusetts, which includes the summits of both Mount Wachusett and Mount Watatic.

### **Miller's River**

[www.northquabbinwoods.org](http://www.northquabbinwoods.org)

Canoeing, kayaking and fishing are allowed on this river. Launch sites are located in Athol, Orange and Winchendon.

### **Monument Park**

Park Street  
Gardner MA 01440  
978-630-4003

A small park where concerts are offered in the summer.

### **Moore State Park**

Sawmill Road  
Paxton MA 01612  
508-792-3969  
701 acres.

### **Mount Watatic**

Ashburnham and Ashby MA 01430  
[www.newenglandtrailreview.com](http://www.newenglandtrailreview.com)

1,832 foot mountain in Ashburnham and Ashby has hiking trails, a part of the Midstate and Wapak trails.

### **Otter River State Park**

86 Winchendon Road  
Baldwinville MA 01436  
978-939-8962  
12,788 acres, 83 campsites.

### **Overlook Farm/Heifer International**

216 Wachusett Street  
Rutland MA 01543  
508-886-2221  
[www.heifer.org](http://www.heifer.org)

This learning center of Heifer International offers tours, a global village and service/learning programs.

### **Rutland State Park**

Rte. 122A/2 Crawford Rd  
Rutland MA 01543  
508-886-6333  
396 acres.

### **Sholan Farms**

1125 Pleasant Street  
Leominster MA 01453  
978-840-3276  
[www.sholanfarms.org](http://www.sholanfarms.org)

A family-oriented recreation and education farm of 169 acres owned by the City of Leominster and operated by the Friends of Sholan Farms. Offers festivals, tours, and sale of apples, raspberries and blueberries.

### **Tower Hill Botanic Garden**

11 French Drive, P.O. Box 598  
Boylston MA 01505  
508-869-6111  
[www.towerhillbg.org](http://www.towerhillbg.org)

Owned and operated by the Worcester County Horticultural Society, Tower Hill offers distinctive gardens, trails, a café, gift shop, classes and special events. Admission fee.

### **Wachusett Mountain State Reservation**

345 Mountain Road  
Princeton MA 01541  
978-464-2987  
[www.mass.gov/dcr/parks/central/wach](http://www.mass.gov/dcr/parks/central/wach)

2,006 foot peak with 17 miles of hiking trails as well as an access road open to personal vehicle use from Memorial Day to end of October

## ***Pools***

### **Greenwood Memorial Pool Complex**

69 Park Street  
Gardner MA 01440  
978-632-0678

Both indoor and outdoor pools open to the public. Home to the Greenwood Memorial Swim Club.

### **Philip J. Weihl Memorial Pool**

40 W. Boylston Street  
Clinton MA 01510  
978-365-4684.  
[www.mass.gov/dcr/recreate/pools.htm](http://www.mass.gov/dcr/recreate/pools.htm)

# Enrichment/Recreation

---

## *Service Organizations*

### **Ashburnham Lions Club**

P.O. Box 813  
Ashburnham MA  
978-827-6696

### **Ashburnham-Westminster Rotary Club**

Ashburnham and Westminster MA  
978-874-5557

A member club of Rotary International, a service club of business and professional leaders that provides humanitarian service and encourages high ethical standards in all vocations, the AW Rotary Club meets monthly and supports local programs.

### **Friends of Forbush Memorial Library**

118 Main Street  
Westminster MA 01430  
978-874-7416

Organization that supports Westminster's town library. Holds an annual ice cream festival.

### **Westminster Lions Club**

P.O. Box 618  
Westminster MA 01430  
[www.westminsterMa.lionwap.org](http://www.westminsterMa.lionwap.org)

Lion's Club meetings are held on the the second and fourth Wednesdays. Events conducted by the Westminster Lions Club include monthly pancake breakfasts to benefit local organizations, an annual auction and Christmas tree sale.

### **Westminster Women's Club**

Westminster MA 01430  
978-874-2200

Westminster Women's Club meets 3-4 times per year. Awards scholarships to local graduates.

## *Theatre/Music*

### **Barre Players Theatre**

64 Common Street  
Barre MA 01005  
978-355-2096  
[barre\\_players@yahoo.com](mailto:barre_players@yahoo.com)

A non-profit community theatre group that offers plays throughout the year.

### **Clinton Community Theatre**

242 Church Street  
Clinton MA 01510  
978-368-1312  
[www.clintoncommtheatre.com](http://www.clintoncommtheatre.com)

### **Cornerstone Performing Arts Center**

First Parish Church, 914 Main Street  
Fitchburg MA 01420  
978-345-2915  
[www.cpacfitchburg.org](http://www.cpacfitchburg.org)

Non-profit arts organization offering training in music, drama and dance. Plays and other performances are offered throughout the year.

### **Stratton Playhouse**

60 Wallace Avenue  
Fitchburg MA 01420  
978-345-6066  
[www.strattonplayers.com](http://www.strattonplayers.com)

Community theatre group in its 86th season that offers 4 productions each year.

### **Thayer Symphony Orchestra**

14 Monument Square, 4th Floor  
Leominster MA 01453  
978-466-1800  
[www.thayersymphony.org](http://www.thayersymphony.org)

An independent non-program community orchestra directed by Maestro Francis Wada. Performances are held at the Stratos Dukakis Performing Arts Center at Montachusett Regional Vocational Technical School.

### **Theatre at the Mount (MWCC)**

444 Green Street  
Gardner MA 01440  
978-632-2403

Plays and performances offered throughout the year.

## Enrichment/Recreation

---

### **Wachusett Music**

725 Main Street  
Lancaster MA 01523  
978-365-2043  
www.wachusettmusic.com

Coffee houses and folk festival productions.

### **Westminster Town Band**

Westminster MA 01473  
978-874-2851

A volunteer band that marches in local parades and offers summer band concerts on the Academy Hill town common.

## **YMCA**

### **YMCA - Greendale Family Branch**

75 Shore Drive  
Worcester MA  
508-852-6694

### **YMCA - Montachusett Regional**

55 Wallace Avenue  
Fitchburg MA 01420  
978-242-4847  
www.montymca.org

YMCA programs include health & fitness, aquatics, childcare and sports. This YMCA also offers summer camps for children 5-14 at Camp Lowe.

### **YMCA - Wendell P Clark Memorial**

155 Central Street  
Winchendon MA 01475  
978-297-9622  
www.theclark.com

YMCA programs include health & fitness, aquatics, arts, gymnastics, childcare and sports.

## **Youth**

### **American Little League**

PO Box 1487  
Leominster MA 01453  
978-537-5651  
hurricanelora34@verizon.net

For ages 5 – 10. Meets at Bachand Field, American Way.

### **Ashburnham Little League**

South Street School  
Ashburnham MA 01430  
978-827-6567  
tomdonnaG@Verizon.net

Little League program with t-ball to major league baseball and softball teams.

### **Athol-Mahar Pop Warner**

PO Box 367  
Orange MA 01364  
www.atholmaharpopwarner.com

### **Babe Ruth League**

978-534-3415

For ages 13 – 18. Meets at McLaughlin Park, 1000 R Lancaster St.

### **Barre Youth Commission**

978-355-3040

### **Boy Scouts of America**

1980 Lunenburg Road  
Lancaster MA 01523  
978-534-3532  
www.nashuavalleybsa.org  
www.scouting.org

### **Boys & Girls Club of North Central Mass.**

365 Lindell Avenue  
Leominster MA 01453  
978-665-3760  
www.boysandgirlsclubncm.org

### **Fitchburg Pop Warner**

PO Box 7086  
Fitchburg MA 01420  
www.fitchburgpopwarner.com

## Enrichment/Recreation

---

### **Football AFY**

Leominster MA 01453

### **Gardner Little League**

Gardner MA 01440

PRESIDENT.GYBSL@GMAIL.COM

### **Giguere Gymnastics School**

148 Main Street (Route 9)

Cherry Valley MA

508-892-3797

[www.gigueregym.com](http://www.gigueregym.com)

Full day gymnastics, dance, cheer or martial arts camp or mini camp  
3.5-6 yrs.

### **Girl Scouts of America**

81 Goldstar Boulevard

Worcester MA 01606

508-853-7447

Ashburnham: 978-827-5492

### **Greater Gardner Youth Hockey**

Veterans Skating Arena

Gardner MA 01440

978-632-4310

[www.fmcicebergs.com](http://www.fmcicebergs.com)

Ice hockey program.

### **Gymnastics Learning Center**

574 Lake Street

Shrewsbury MA 01545

508-792-1551

508-792-3535

[glc574@townisp.com](mailto:glc574@townisp.com)

Kinderkids & Field of Dreams Full day camps.

### **Lassie Softball League**

PO Box 362

Leominster MA 01453

[www.eteamz.com/leomlassieleague](http://www.eteamz.com/leomlassieleague)

Ages 9 – 15. Meets at Crisci Street.

### **Leominster DEK Hockey**

56 Mead Street

Leominster MA 01453

[www.ltdadekhockey.com](http://www.ltdadekhockey.com)

### **Leominster Pop Warner**

PO Box 874

Leominster MA 01453

[www.leominsterpopwarner.com](http://www.leominsterpopwarner.com)

### **Leominster Youth Soccer Association**

PO Box 1314

Leominster MA 01453

978-537-6711

[www.leominsteryouthsoccer.org](http://www.leominsteryouthsoccer.org)

For ages 5-up. Meets at Samoset Fields, DeCiccio Dr.

### **Little League**

[www.eteamz.com](http://www.eteamz.com)

### **Meridian Gymnastics & Youth Fitness**

871 W Broadway

Gardner MA 01440

978-630-1100

[meridiangymnastics.com](http://meridiangymnastics.com)

### **Nashoba Baseball**

56 Malburn Street

Leominster MA 01453

508-561-4268

[www.boltonlittleleague.org](http://www.boltonlittleleague.org)

### **National Little League**

PO Box 13455

Leominster MA 01453

978-537-2773

[www.leominsternational.org](http://www.leominsternational.org)

For ages 5 – 12. Meets at Picucci Field 97, 198 Arlington Street.

### **North Leominster Little League**

978-537-8315

[www.eteamz.com/nlll/](http://www.eteamz.com/nlll/)

For ages 5-12. Meets at Justin DeSantis Field, 45 Bernice Ave. Email: [nlll\\_baseball@hotmail.com](mailto:nlll_baseball@hotmail.com)

### **North Middlesex Pop Warner**

PO Box 59

Townsend MA 01469

978-597-2757

[www.nmpopwarner.com](http://www.nmpopwarner.com)

## Enrichment/Recreation

---

### **Oakmont Outlaws Soccer Club**

Ashburnham & Westminster MA  
978-874-1834  
www.oakmontoutlaws.com

Soccer club offering boys and girls teams from under age 10 to under age 18 who are full time students. Member of the Nashoba Valley Youth Soccer League.

### **Oakmont Pop Warner Football**

P.O. Box 332  
Westminster MA 01473  
www.oakmontpopwarner.com

Youth football and cheerleading program for Ashburnham and Westminster children ages 5 to 15. Member of the Central Massachusetts Pop Warner League.

opwpresident@yahoo.com

### **Oakmont Youth Basketball League**

Ashburnham & Westminster MA 01473  
www.oakmontyouthbasketball.com

Town basketball league for children in grades 1 to grade 9 in the towns of Ashburnham and Westminster.

### **Oakmont Youth Soccer**

Ashburnham & Westminster  
978-874-4054  
978-827-5483  
www.oakmontyouthsoccer.com

Youth soccer for U10 - U14-16.  
kimroger@oakmontyouthsoccer.com

### **Pop Warner Football & Cheerleading**

Leominster MA 01453  
978-537-9177  
www.leominsterpopwarner.com

Ages 7 – 15. Meets at Fournier Park, 525 Litchfield Street. Email: jpetkewich@comcast.net

### **Sterling Academy of Gymnastics**

15 Industrial Drive  
Sterling MA 01564  
978-422-7655  
www.sterlinggym.com

Programs for children ages PreK and up.

### **Sting Lacrosse**

Ashburnham & Westminster MA 01473  
www.ncmlax.com

Town lacrosse program offering teams from U9 to U15.  
Contact the president via email at: president@ncmlax.com

### **Twin City Youth Hockey**

Wallace Civic Center  
Fitchburg MA 01420  
978-345-7157  
www.twincityhockey.com

Non-profit organization providing hockey for youth in Fitchburg, Leominster, Lunenburg, Townsend, Ashby and Pepperell.

### **Veterans Memorial Arena**

45 Veterans Drive (off Park Street)  
Gardner MA 01440  
978-632-4310

### **Westminster Little League**

P.O. Box 555  
Westminster MA 01473  
978-874-6378  
www.westminsterbaseball.org

Little League program with t-ball to major league baseball and softball teams.

### **Winchendon Pop Warner**

PO Box 204  
Winchendon MA 01475  
www.winchendonpopwarner.org

### **Wrestling: Leominster Youth Commission**

25 West Street  
Leominster MA 01453  
www.lywp.org

Ages K – 8. Contact Donna Ciccone. Meets at Northwest School, 45 Stearns Avenue, Leominster.



# Family Services

---

## ***Food Assistance***

### **Barre WIC office. Barre Family Health Center**

151 Worcester Road  
Barre MA 01005  
978-630-3344  
978-345-6272

Open 2nd Thursday

### **Clinton WIC Office/ WHEAT office**

500 Main Street 2nd Floor  
Clinton MA 01510  
978-365-6349  
Ext's (4946 or  
4947)

Open Tues and Thursday's . Open 3rd Tues 10:30am-6:30pm

### **Gardner WIC office**

47 Parker Street  
Gardner MA 01440  
978-630-3344

Open Tues, Wed, & Fri. Open 1st & 3rd W 10:30am-6:30pm

### **Leominster WIC office**

53 Merriam Avenue  
Leominster MA 01453  
978-534-9117

Open Mon, Tues, Thurs & Fri. Open 2nd & 4th Th 10:30am-6:30pm

### **Winchendon WIC office (CAC)**

273 Central Street  
Winchendon MA 01475  
978-630-3344  
978-345-6272

Open 1st & 3rd Thursdays

## ***General***

### **Adoptive Families Together**

335 Chandler Street  
Worcester MA 01602  
617-587-1500  
617-587-1522

[www.mspcc.org](http://www.mspcc.org)

Group for adoptive parents and those considering adoption. Meets on the 3rd Thursday ~7-9pm. No meeting July or August.

### **Anti-Defamation League (ADL) Jewish Philanthropies**

617-406-6300

[www.adl.org](http://www.adl.org)

Works with schools to fight anti-Semitism, prejudice, bigotry and racism.

### **Children's Aid & Family Service, Inc. (CAFS)**

1480 John Fitch Highway  
Fitchburg MA 01420  
978-342-8971

[www.sevenhills.org](http://www.sevenhills.org)

Programs: Family Counseling Center; Intervention and treatment program and divorce mediation services and divorce seminars. Child Care Center: Toddlers to 4 years old (978-342-8971). Child Care Resources: Information and referral (978-343-7395); family child care: (978-343-7409)

### **Community Action of the North Quabbin, Inc.**

393 Main Street  
Greenfield MA 01301  
413-774-2318  
413-773-3834

[www.communityaction.us/](http://www.communityaction.us/)

Community Action of the Franklin, Hampshire, and North Quabbin Regions is dedicated to promoting economic justice and improving the quality of life for people with lower incomes.

### **Domestic Violence Ended (DOVE)**

P.O. Box 690267  
Quincy MA 02269  
617-471-1234  
888-314-3683

[www.doveinc.org](http://www.doveinc.org)

Outreach and Family Services.

# Family Services

---

## **Family Services of Central Mass.**

31 Harvard street  
Worcester MA 01609  
508-756-4646  
www.fscm.org

Children's Divorce Adjustment Group: provides support and a forum for children to express their feelings and concerns. "Parents Apart:" monthly evening seminar addresses how to ease traumatic impact of divorce on children. Separated/Divorced Women's Group: Support and information for ending a relationship and beginning a new life. Family & Group counseling service.

## **Jewish Family Services**

646 Salisbury Street  
Worcester MA 01609  
508-755-3101

Beyond divorce: A children's and parents' guide to family reorganization. Divorce Support Group: For men and women who are reorganizing their lives after separation and divorce. Divorce Seminars for Parents: On-going sessions for parents who are separated or divorced provide information on co-parenting, children's reactions and other related issues. Family & Group counseling service.

## **Montachusett Opportunity Council, Inc.**

133 Prichard Street  
Fitchburg MA 01420  
978-342-7013  
www.mocinc.org

Montachusett Opportunity Council, Inc. is the designated Community Action Agency serving North Central Massachusetts. The mission of Montachusett Opportunity Council, Inc. is to develop collaborative opportunities and empower low-income individuals and families in the Montachusett region to achieve self-sufficiency.

## **North Quabbin Community Coalition**

10 School Street  
Athol MA 01331  
978-249-3703  
www.nqcc.org

Comprehensive online resource directory of North Quabbin area services.

## **Springfield Partners for Community Action, Inc.**

619 State Street  
Springfield MA 01109  
413-263-6500  
www.springfieldpartnersinc.com/

Community Action Agencies are private non-profit or public organizations that were created by the federal government in 1964 to combat poverty in geographically designated areas.

## **United Neighbors of Cleghorn (Cleghorn Neighborhood Center)**

18 Fairmount Street  
Fitchburg MA 01420  
978-342-2069

Food Distribution: 9 a.m. to 12:30 p.m. Monday through Thursday. Appointments available for working clients.

## **Worcester Community Action Council, Inc. (WCAC)**

484 Main Street, 2nd Floor  
Worcester MA 01608  
508-754-1176  
508-754-0203  
www.wcac.net

Our mission is to stimulate change in the fundamental causes of poverty and to create and provide opportunities for economic self-sufficiency through services, partnership, and advocacy.

## **Youth Opportunities Upheld (YOU, Inc.)**

81 Plantation Street  
Worcester MA 01604  
508-849-5600  
978-632-2321  
www.youinc.org

Individual, family or group therapy for families dealing with divorce/remarriage issues.

## ***Grief Support Group***

### **Community Birth Loss Support Group**

250 Green Street  
Gardner MA 01440  
978-632-3420

First month of each month, 7-8:30 p.m. For any Parent experiencing the loss of a baby through miscarriage, stillbirth, or newborn death.

### **Compassionate Friends**

111 Park Ave  
Worcester MA 01609  
508-755-6143

Meets on the third Tuesday of the month at 7 p.m.; July & August third Thursday 7 p.m.

## ***Health Care***

### **UMASS Memorial Health Care/Family Education Center - Baby-Sitting Program**

119 Belmont Street  
Worcester MA 01605

Learn about infant and toddler care, dealing with emergencies, safety. Four week session, ages 11 and up.

# Family Services

---

## *Housing/Shelters*

### **Athol Housing Authority**

P.O. Box 207  
Athol MA 01331  
978-249-4848

Administers Section 8 (federally subsidized housing for low-income families) and provides affordable housing.

### **Barre Housing Authority**

146 Ruggles Lane  
Barre MA 01005  
978-355-6643

Administers Section 8 (federally subsidized housing for low-income families) and provides affordable housing.

### **Clinton Housing Authority**

58 Fitch Road  
Clinton MA 01510  
978-365-4150

Administers Section 8 (federally subsidized housing for low-income families) and provides affordable housing.

### **Fitchburg Housing Authority**

50 Day Street  
Fitchburg MA 01420  
978-343-7025

Administers Section 8 (federally subsidized housing for low-income families) and provides affordable housing.

### **Gardner Housing Authority**

116 Church Street  
Gardner MA 01440  
978-632-6627

Administers Section 8 (federally subsidized housing for low-income families) and provides affordable housing.

### **Greater Gardner Community Development Corporation**

246 Central Street  
Gardner MA 01440  
978-630-2975 x 306  
www.ggcdc.org

The Greater Gardner Community Development Corporation promotes self-sufficiency by creating affordable housing opportunities and providing additional programs that raise the economic, educational, and social levels of residents in its service area.

### **Habitat for Humanity, North Central Massachusetts**

1 Oak Hill Road  
Fitchburg MA 01420  
978-348-2749  
www.ncmhabitat.org

A non-profit organization working locally to provide for families, Habitat for Humanity builds and rehabilitates houses with the help of partner homeowners and volunteers.

### **Lancaster Housing Authority**

449 Main St., P.O. BOX 507  
Lancaster MA 01523  
978-365-3923

Administers Section 8 (federally subsidized housing for low-income families) and provides affordable housing.

### **Leominster Housing Authority**

100 Main Street  
Leominster MA 01453  
978-537-2861

Administers Section 8 (federally subsidized housing for low-income families) and provides affordable housing.

### **Our Father's House, Inc.**

53-55 Lunenburg Street  
Fitchburg MA 01420  
978-345-3050

Provides meals, shelter, housing search, case management, and advocacy services to homeless men and women.

### **RCAP Solutions, Inc.**

205 School Street, P. O. Box 159  
Gardner MA 01440  
978-630-6771  
www.rcapsolutions.org

RCAP Solutions is a non-profit organization providing planning, consulting and direct services to individuals and communities in areas including housing, debt reduction counseling, developing budgets, and clean water systems.

### **Winchendon Housing Authority**

108 Ipswich Drive  
Winchendon MA 01475  
978-297-2280

Administers Section 8 (federally subsidized housing for low-income families) and provides affordable housing.

# Family Services

---

## **Mental Health**

### **Call2Talk**

508-532-CALL,  
(2255)

Mental health and Emotional support Line...10am-3pm , 7 days/week

### **Heywood Hospital**

242 Green Street  
Gardner MA 01440  
978-630-6458

Jill Cormier, LCSW. Birth/Loss Support Group

### **Milford Regional Medical Center**

14 Prospect Street  
Milford MA 01757  
508-422-2030

Karen Pecci, LCSW. Birth/Loss Support Group

### **South Bay Mental Health Center**

340 Main Street Suite 383  
Worcester MA 01608  
508-791-4976  
intake# 508-427-  
5362

[www.southbaymentalhealth.com](http://www.southbaymentalhealth.com)

### **The Lipton Center (run by Community HealthLink)**

255 Main Street  
Fitchburg MA 01420  
508-860-1000  
[www.communityhealthlink.org](http://www.communityhealthlink.org)

### **The Lipton Center (run by Community HealthLink)**

110 Erdman Way  
Leominster MA 01453  
978-537-3324  
[www.communityhealthlink.org](http://www.communityhealthlink.org)

## **Parent/Child Programs**

### **Athol Parent Child Home Program**

423 Main Street  
Athol MA 01331  
978-249-7661

Home based early literacy and parenting program for families with children ages 16 months to 4 years.

### **Fitchburg Parent Child Home Program**

356 Broad Street  
Fitchburg MA 01420  
978-345-8549 x 323

Home based early literacy and parenting program for families with children ages 16 months to 4 years.

### **Franklin Community Action Corporation**

393 Main Street  
Greenfield MA 01301  
413-774-318  
[www.communityaction.us](http://www.communityaction.us)

The Franklin County Family Network brings parents together with early childhood educators and other community members to create opportunities for fun and stimulating activities with their children.

### **La Leche League (Worcester Chapter)**

557 Pleasant Street

2nd Tuesday of the month 930-1130

### **Lunenburg Family Network, Eagle House**

25 Memorial Drive  
Lunenburg MA 01462  
978-528-1429

The Family Network Program of Lunenburg under the Mass. Department of Early Education and Care provides collaborative, comprehensive, high quality family support services that are free of charge, welcoming and accessible to all Lunenburg families with young children (pre-natal through 4 years old). We sponsor weekly playgroups, parenting classes, family activities, and community forums.

For more information or if you would like to be on our mailing list, contact our office.

### **North Quabbin Family Network, Valuing Our Children**

27 Walnut Street  
Athol MA 01331  
978-249-8467

# Family Services

---

## **North Worcester County Healthy Families**

35 Main Street  
Fitchburg MA 01420  
978-665-9078

## **Parents Helping Parents**

108 Water Street  
Watertown MA 02472  
800-632-8188  
617-926-5008  
[www.parentshelpingparents.org](http://www.parentshelpingparents.org)

Parents Helping Parents pursues its child abuse prevention mission by providing two free parent support services: 1) a 24-hour parent helpline that provides telephone counseling and information and referral to parents; and 2) a network of anonymous and confidential Parent Support Groups that meet in many locations throughout Massachusetts.

## **Peter Pan Center**

280 Ayer Road.P.O.Box 312  
Harvard  
Ma 01451  
978-772-1255  
[www.peterpancenter.com](http://www.peterpancenter.com)  
social skills, private pay only

## **Play School (Clinton Community Partnerships for Children)**

150 School Street, Room 208  
Clinton MA 01510  
978-365-4218  
[www.clinton.k12.ma.us](http://www.clinton.k12.ma.us)

Provides a moderately structured adult/child "Play School" program in which families with children ages 0 - 6 years play and learn together. Primarily for Clinton residents only.

## **Quabbin Parent Child Home Program**

21 Allen Dr  
Barre MA 01005  
978-355-0266

Home based early literacy and parenting program for families with children ages 16 months to 4 years.

## **The House of Peace & Education, Inc. (HOPE)**

20 Barthel Avenue, Gardner, MA 01440  
Gardner MA 01440  
978-630-4752  
[www.hopegardner.org](http://www.hopegardner.org)

The House of Peace & Education, Inc. was founded in 1996 in response to high levels of poverty and a growing trend of violence in the greater Gardner area of Massachusetts. With a mission of countering violence and promoting peace through education, leadership development and mentoring, HOPE has helped hundreds of at risk children and women to reclaim their futures.

## **Pregnant Women & Children**

### **Ayer WIC Office**

63 Park Street  
Ayer MA 01420  
978-772-0191  
[www.mass.gov/wic](http://www.mass.gov/wic). Open Mondays/Wednesdays

Provides supplemental foods, nutrition education, and health care referrals to pregnant and post partum women.

### **Babysitting Program at Clinton Hospital**

203 Highland Street  
Clinton MA 01510  
978-368-3716

### **North Central WIC Program**

375 Nichols Rd  
Fitchburg MA 01420  
978-345-6272  
[www.mass.gov/WIC](http://www.mass.gov/WIC)

Provides supplemental foods, nutrition education, and health care referrals to pregnant and post partum women.

# Family Services: Mental Health

## **Emergency**

### **Central Region Department of Children and Families**

25 Winthrop Street, Suite 300  
Worcester MA 01604  
508-929-2130

The Department's vision is to ensure the safety of children in a manner that holds the best hope of nurturing a sustained, resilient network of relationships to support the child's growth and development into adulthood.

### **Child-At-Risk Hotline**

53 Parker Hill Avenue  
Boston MA 02120-3225  
800-792-5200  
617-232-4882

[www.jbcc.harvard.edu/programs/hotline.htm](http://www.jbcc.harvard.edu/programs/hotline.htm)

Working under the auspices of the Massachusetts Department of Children and Families since July 1982, Judge Baker Children's Center directs the Child At-Risk Hotline, a statewide after-hours emergency response system. A 30-member staff is trained to assess the urgency of each call, elicit critical information, and provide a sympathetic ear.

The Hotline operates 24 hours a day, 7 days a week, with DCF Area offices fielding calls weekdays from 9:00 a.m. to 5:00 p.m. and Judge Baker covering evenings and weekends.

### **Mass. Department of Children and Families**

140 High Street, 5th Floor  
Springfield MA 01105  
413-452-3350

The Department's vision is to ensure the safety of children in a manner that holds the best hope of nurturing a sustained, resilient network of relationships to support the child's growth and development into adulthood.

Greenfield: 143 Munson St., Unit 4 (413-775-5000 or 800-842-5905)  
Worcester: 25 Winthrop St., Ste. 300 (508-929-2130)  
Leominster: 690 Mechanic St., Ste. (978-466-1500 or 800-479-6111)

### **North Central Department Of Children and Families**

690 Mechanic Street, Suite 100  
Leominster MA 01453  
978-353-3600  
800-479-6111

The Department's vision is to ensure the safety of children in a manner that holds the best hope of nurturing a sustained, resilient network of relationships to support the child's growth and development into adulthood.

## **General**

### **Community Healthlink/Worcester Youth & Family Services**

275 Belmont Street  
Worcester MA 01604  
508-791-3261  
[www.communityhealthlink.org](http://www.communityhealthlink.org)

Psychological assessment at the center and off-site preschool settings. Counseling and support services.

### **Kid's Net Connection MSPCC**

335 Chandler Street  
Worcester MA 01602  
800-486-3730

5pm-9am (M-F); 24 hrs. weekends & holidays, after hours telephone information and support service for DSS foster parents, kinship providers and pre-adoptive parents including emergency home visits.

### **LUK Inc.**

545 Westminster Street  
Fitchburg MA 01420  
978-345-0685  
[www.luk.org/index.php](http://www.luk.org/index.php)

Social service agency dedicated to improving the lives of youth and their families. Offers various services including a young parent support group.

### **North Central Human Services, Inc.**

31 Lake Street  
Gardner MA 01440  
978-632-9400

### **YANA -You Are Not Alone**

508-752-4200

Monthly grief management meetings, Also radio talk show Sunday 9-10 pm AM 830 WCRN

# Food Assistance

---

## *Farmers Markets*

### **Ashburnham Farmers Market**

Winchester Park behind Town Hall  
Ashburnham MA 01430  
Monday 4-630pm 7/20-10/12

### **Barre Farmers Market**

Barre Common  
Barre MA 01005  
Saturday 9-12:30 5/9-10/9

### **Fitchburg Farmers Market**

Burbank Campus  
Fitchburg MA 01420  
Monday 10-4 7/20-10/26

### **Fitchburg Farmers Market**

Wallace Civic Center  
Fitchburg MA 01420  
Friday 8:45-12:00 7/10-10/31

### **Fitchburg Farmers Market**

Riverfront Park  
Fitchburg MA 01420  
Thursday 3-7 7/2-10/28

### **Gardner Farmers Market**

Monument Park  
Gardner MA 01440  
Thursday 830-1pm---5/9-10/31

### **Hardwick Farmers Market**

Hardwick Common  
Hardwick MA 01031  
Sunday 11-2 6/16-10/28

### **Holden Farmers Market**

Damon House Parking Lot  
Holden MA 01520  
Tuesday 3-630 5/7-10/29

### **Lancaster Farmers Market**

Town Green  
Lancaster MA 01523  
Thursday 3-630 6/20-9/26

### **Orange Farmers Market**

Butterfield Park  
Orange MA 01364  
Saturday 9-1pm 5/21-10/15

### **Paxton Farmers Market**

Town Common  
Paxton MA 01610  
Thursday 3-630 5/13-9/13

### **Phillipston Farmers Market**

Town Center  
Phillipston MA 01331  
Saturday 8-12 6/27-10/31

### **Princeton Farmers Market**

Princeton Community Center  
Princeton MA 01540  
Thursday 3-6 6/18-10/10

### **Sterling Farmers Market**

Town Hall, 1 Park St.  
Sterling MA 01564  
Friday 1-7 5/29-10/30

### **Westminster Farmers Market**

Town Common  
Westminster MA 01473  
westminsterfarmermarket@gmail.com  
Friday 3-7 5/1-10/30

### **Winchendon Farmers Market**

American Legion Park  
Winchendon MA 01475  
Thursday 1-7 5/14-9/30

# Food Assistance

---

## *Food Pantries*

### **Ashburnham Community Church**

84 Main Street  
Ashburnham MA 01440  
978-827-5553

### **Barre Food Bank**

978-355-4519

### **Christ Episcopal Church**

499 Vernon Ave  
S. Barre MA 01005  
978-355-4061

Food Distribution: 10 a.m. to noon, second Wednesday of the month.

### **First Baptist Church Community, Food Cupboard**

23 West St  
Leominster MA 01453  
978-537-2685  
2nd SAT 9-11am. Please call first

### **Ginny's Helping Hands Food Pantry**

52 Mechanic Street  
Leominster MA 01453  
978-537-1387

Food Distribution: Tuesday - Saturday, 10AM - 5PM: Please call first

### **Highland Baptist Church**

27 Cedar Street  
Fitchburg MA 01420  
978-342-9646

2nd & 4th Sat 9.11am.(serving Fitch, Ashby, Lunenburg, and Townsend). Please call First

### **Lighthouse Food Pantry**

500 Main Street  
Athol MA 01331  
978-249-4024

4 to 5:30 p.m. first and third Thursdays. Call for emergencies.

### **Ruth's Harvest Pantry, United Methodist Church**

77 Hall Street  
Leominster MA 01435  
978-537-1356

3rd Thursday 6-8pm; 4th Sat 8-10am: Please call first

### **Rutland Food Pantry**

290 Main Street  
Rutland MA 01543  
508-886-2206

Please call (varies)

### **Salvation Army Food Pantry**

107 Ridge Avenue  
Athol MA 01331  
978-249-8111

Food Distribution: Tuesday through Friday, 8:30-12:00 and 1-3PM

### **Sharing Cupboard Food Pantry**

36 North Main Street  
West Brookfield MA 01585  
508-867-7078

Food Distribution: Wednesday, 10 AM to 12 PM, Thursday, 7:00 to 8:30 PM

### **St. Joseph's Food Pantry**

296 N. Main Street  
North Brookfield MA 01535  
508-867-6811

Food Distribution: 1st Thursday of the month, 6:00 - 7:15 PM; 3rd Thursday of the month, 1 to 3 PM, or by appointment.

### **Stow Food Pantry**

353 Great Road  
Stow MA 01775  
978-779-8233

### **Tri-Parish Community Church Food Bank**

179 Main Street  
Gilbertville MA 01031  
413-477-6635

Food Distribution: 1st and 3rd Friday, 9:30 to 11:30 AM. Call First

### **Wachusett Food Pantry**

56 Boydon Road  
Holden MA 01520  
508-829-2749  
3rd Saturdays 9-11am:Seniors 3rd Friday 10-1130am

### **Wachusett Food Pantry**

P.O. Box 62  
Jefferson MA 01522  
508-829-2749  
www.wfp1995.org

Monthly food distribution at 1st Baptist Church-Holden.



# Food Assistance

---

## **Westminster Food Pantry at First Congregational Church**

138 Main Street  
Westminster MA 01473  
978-874-7970

Food Distribution: Thursdays, 6:30 -7:30 p.m. (Ashburnham & Westminster residents only).

## **Westminster Food Pantry at First Congregational Church**

138 Main Street  
Westminster MA 01473  
978-874-7970  
978-874-2350  
cmcdonald1018@aol.com

Westminster residents only, 630pm-730pm

## **WHEAT Community Services**

500 Main Street  
Clinton MA 01510  
978-365-6349 x 14  
www.uwotc.org/wheat

Food Distribution: Tuesday - Friday, 10 AM to 1 PM.

## **Worcester County Food Bank**

474 Boston Turnpike  
Shrewsbury MA 01545  
508-842-3663

## **General Resources**

### **Angel Food Ministries/Charlton Baptist Church**

50 Hammond Hill Rd  
Charlton MA 01507  
508-248-4488  
www.angelfoodministries.com

Low cost monthly food orders.

### **Catholic Charities**

196 Mechanic Street  
Leominster MA 01453  
978-840-0696

Monday through Friday.

### **Fitchburg/Leominster Community Action Council**

62 Normandy Road  
Fitchburg MA 01420  
978-342-8617

Call First

### **Gardner Community Action Council**

294 Pleasant Street, third floor  
Gardner MA 01440  
978-632-8700

Food Distribution: 9 a.m. to noon Monday through Friday.

### **MOC Elder Services, Senior Center**

66 Day Street  
Fitchburg MA 01420  
978-345-8501 x 01

Call First

### **North Central WIC Program**

326 Nichols Rd., Suite 14  
Fitchburg MA 01420  
978-345-6272  
800-942-1007  
www.mass.gov/wic

Provides supplemental foods, nutrition education, and health care referrals to pregnant and post partum women.

### **Salvation Army**

739 Water Street  
Fitchburg MA 01420  
978-342-3300

Call First

# Food Assistance

---

## **Serve New England: Rollstone Serve Fitchburg**

199 Main Street  
Fitchburg MA 01420  
Rev Hanks, 978-  
821-9571  
Revhanks@rollstone.org

Low cost food ordering co-op; participants must volunteer 2 hours per month.

Barre: 557 South Barre Road (978-355-6659)  
Athol: 120 School Street (978-249-3464)  
Gardner COA: 294 Pleasant Street (978-630-4067)  
Hardwick: 179 Main Street (413-477-6707)

## **Spanish American Center**

112 Spruce Street  
Leominster MA 01453  
978-534-3145  
Call First

## **St. Vincent dePaul at Saint Leo's Church**

108 Main Street  
Leominster MA 01453  
978-537-7257  
Call First

## **St. Vincent dePaul Society at Sacred Heart Church**

166 Cross Street  
Gardner MA 01440  
978-632-0237

Food Distribution: 10 a.m. to 5 p.m. weekdays. Call for appointment.

## **Supplemental Nutrition Assistance Program (SNAP)**

866-950-3663      Mass. Hotline  
[www.fns.usda.gov/snap](http://www.fns.usda.gov/snap)

Federal nutrition program administered by State and local agencies.

## **Meals**

### **Fellowship Table**

Pleasant Street  
Gardner MA 01440  
987-632-8700

Thursdays at 4:30 First school year Sept-June

### **Kid's Café**

65 Tainter St  
Worcester MA  
508-754-2686

Tuesday, Wednesday, and Thursday nights at 5 p.m. during school year.

### **Mustard Seed**

93 Piedmont Street  
Worcester MA  
508-754-7098

Monday-Saturday 5-6:30.; Sunday noon.

### **Our Father's Table**

40 Boutelle St  
Fitchburg MA 01420  
978-345-6950

Dinner Tuesdays, Thursdays at 5-7 p.m.; Saturday Breakfast 8-9am; Food Pantry, limited food vouchers.

53-55 Lunenburg Street: community dinner twice a month and emergency food pantry.

### **WHEAT Community Café**

242 High Street  
Clinton MA 01510  
978-368-8547  
[www.uwotc/WHEAT](http://www.uwotc/WHEAT)

Delicious freshly made meals including vegetarian dishes served 6 nights per week. (4pm-630)

# Health Services

---

## *Clinics/ Free Care*

### **Community Health Connections/Access Program**

275 Nichols Rd  
Fitchburg MA 01420  
978-878-8100  
www.chcfamilyhealth.org

Provides comprehensive medical, dental, mental health care to uninsured and underinsured residents

### **Gardner Community Health Center**

175 Connor Street  
Gardner MA 01440  
978-630-5751  
www.chcfamilyhealth.org

Provides comprehensive medical, dental, mental health care to uninsured and underinsured residents

### **Gateway Health Access Program**

242 Green Street  
Gardner MA 01440  
978-632-3420  
www.heywood.org

Help uninsured people access affordable health care

### **MassHealth**

800-841-2900  
www.mass.gov

Help with health insurance for low income population.  
MassHealth - Spanish: 800-223-5001

## *Dental*

### **Family Health Center Dental**

275 Nichols Rd.  
Fitchburg MA 01420  
978-878-8440  
978-878-8300  
www.chcfhc.org

Simple dental procedures, x-rays and exams.

### **Great Brook Valley Health Center**

200 High Street  
Clinton MA 01510  
978-368-0340  
www.gbvhc.org

Dental care only; services all types of insurance (low income families/Mass Health accepted).

### **Mass Health Dental**

800-207-5019  
www.mass.gov  
State subsidized dental care

## *Emergency*

### **Battered Women's Resources, Inc.**

14 Monument Square  
Leominster MA 01453  
978-537-2306  
www.bwri.com

Support for women and their children involved in domestic violence situations  
Gardner: 168 Chestnut St. (978-632-4424)

### **Childhood Lead Poisoning Prevention**

356B Broad Street 4thFloor  
Fitchburg MA 01420  
978-342-6259  
800-532-9571

### **Rape Crisis Center of Central Mass. Inc.**

275 Nichols Rd  
Fitchburg MA 01420  
978-343-5683  
www.rapecrisiscenter.org

### **Suicide & Crisis Hotlines**

800 SUICIDE  
800-273-8255

# Health Services

---

## General

### **ACTION Health Services, Community Health Connections**

275 Nichols Street

978-878-8100

[www.chcfhc.org/action](http://www.chcfhc.org/action)

A team of family physicians, nurse practitioners, and medical assistants provide primary medical care. Community health workers also provide supportive services such as health insurance, referrals to housing, fuel assistance and more.

Locations in Fitchburg, Gardner, Leominster and Winchendon.

A team of family physicians, nurse practitioners, and medical assistants provide primary medical care. Community health workers also provide supportive services such as health insurance, referrals to housing, fuel assistance and more. Locations in Fitchburg, Gardner, Leominster and Winchendon.

A team of family physicians, nurse practitioners, and medical assistants provide primary medical care. Community health workers also provide supportive services such as health insurance, referrals to housing, fuel assistance and more. Locations in Fitchburg, Gardner, Leominster and Winchendon.

### **Better Breathers Club**

242 Green Street

Gardner MA 01440

978-630-6222

[heglin.p@heywood.org](mailto:heglin.p@heywood.org)

1st Monday-2:30pm-3:30pm

### **Crosspoints Men's Health Collective (HIV)**

35 Main Street

Fitchburg MA 01420

978-665-9078

[www.gardnervna.org](http://www.gardnervna.org)

### **Gardner Visiting Nursing Association**

34 Pearly Lane

Gardner MA 01440

978-632-1230

Provides skill nursing, maternal/child health nursing, certified home hospice care, assisted living program, home health aid, OT & PT

### **Leominster Community Health Center**

14 Manning Ave 4th Floor, Suite 402

Leominster MA 01453

978-847-0110

[www.chcfhc.org/leominster](http://www.chcfhc.org/leominster)

medical, dental, behavioral, and pharmacy services, available w/out insurance. Portuguese and Spanish available

### **Lifetime Center for Family Health**

Worcester Medical Center 20 Worcester Center Blvd.

Worcester MA

508-368-3192

Health, education, library, CPR class

### **Mass. Rehabilitation Commission**

76 Summer Street

Fitchburg MA 01420

978-792-7380

[www.mass.gov/mrc](http://www.mass.gov/mrc)

### **UMASS Memorial Home Health & Hospice**

650 Lincoln Street

Worcester MA 01605

508-754-0052

Free immunizations. Multi-lingual practitioners offer home visits and follow up care.

## HIV/AIDS

### **HIV/AIDS Support, Education & Advocacy**

242 Green Street

Gardner MA 01440

978-630-6490

[www.heywood.org](http://www.heywood.org)

Provides workshops on HIV/AIDS to schools, church groups, support groups

# Health Services

---

## *Home/Homeless Health Care*

### **Gardner Visiting Nurse Association**

34 Pearly Lane  
Gardner MA 01440  
978-632-1230 3011  
www.gardnervna.org

Provides skill nursing, maternal/child health, home nursing, certified home hospice care, assisted living, home infusion therapy, home health aid and physical/occupational therapy.

### **Home Staff - Leominster**

100 Erdman Way  
Leominster MA 01453  
978-466-1150  
800-779-3312  
www.homestaffma.com

Family owned licensed home health care agency, homemaking, errands/shopping, meal preparation, escort, companionship, medication reminders

### **Montachusett Home Care**

690 Mechanic Street  
Leominster MA 01453  
978-466-5400  
www.montachusetthomecare.com

Provides personal finances/budget counseling, home health care, widow/widower support groups, geriatric assessment and in home assistance.

### **Orchard Street Shelter**

17 Orchard Street  
Leominster MA 01453  
978-537-3109  
www.communityhealthlink.org

Residential treatment for pregnant or parenting women for up to twelve months. Transitional housing/ shelter and some services for their affected teens.

## *Hospitals*

### **Athol Memorial Hospital**

2033 Main Street  
Athol MA 01331  
978-249-3511  
www.atholhospital.com

### **Barre Health Center**

151 Worcester Rd  
Barre MA 01005  
978-355-6321

### **Burbank Rehabilitation Center**

275 Nichols Rd  
Fitchburg MA 01420  
800-595-5000  
www.umassmemorial.org

### **Emerson Hospital**

133 Old Road To Nine Acre Corner  
Concord MA 01742  
978-369-1400

### **HealthAlliance Hospital**

275 Nichols Rd  
Fitchburg MA 01420  
800-595-5000  
www.umassmemorial.org

### **HealthAlliance Hospital**

60 Hospital Rd  
Leominster MA 01453  
978-466-2000  
www.umassmemorial.org

### **Heywood Hospital**

242 Green Street  
Gardner MA 01440  
978-632-3420  
www.heywood.org

### **Nashoba Valley Medical Center**

200 Groton Road  
Ayer MA 01432  
978-784-9000  
www.nashobamed.com

## Health Services

---

### **St. Vincent's Hospital**

123 Summer Street  
Worcester MA  
508-363-5000  
[www.womenshealthmatters.ca/index.cfm/](http://www.womenshealthmatters.ca/index.cfm/)

Women's Health Matters  
American Pregnancy Assoc.: [www.americanpregnancy.org](http://www.americanpregnancy.org)  
Baby Center : [www.babycenter.ca/pregnancy.org](http://www.babycenter.ca/pregnancy.org)

### **The Barre Integrated Health Center**

35 South Street  
Barre MA 01005  
978-355-3501  
[www.listeningwellness.org](http://www.listeningwellness.org)

Promotes access to health care and encourage self-education.  
Provide access to complementary care and community education to self- health care.

### **UMass Memorial Health Care**

119 Belmont Street  
Worcester MA 01605  
508-334-0100 -  
pager  
508-334-  
8567.Voice mail  
Elena Coffey, MA LCSW.Birth/Loss Support Group

### **UMass Memorial Medical Center**

119 Belmont Street  
Worcester MA 01605  
508-334-1000  
[www.umassmemorial.org](http://www.umassmemorial.org)

### **Umass/Clinton Hospital**

201 Highland Street  
Clinton MA 01510  
978-368-3000  
[www.umassmemorial.org](http://www.umassmemorial.org)

## *Housing for Patients' Families*

### **ACS Worcester Hope Lodge**

7 Oak Street  
Worcester MA 01609  
508-792-2985  
[www.cancer.org](http://www.cancer.org)

Housing for patients' families.

### **Why Me/Sherry's House**

1152 Pleasant Street  
Worcester MA 01602  
508-757-7734  
[www.info@whyme.org](mailto:www.info@whyme.org)

Housing for patients' families.

# Health Services

---

## *Pregnant Women & Children*

### **Care-Net Pregnancy Resource Center**

515 Main Street, #1000

Fitchburg MA 01420

978-342-4244

[www.carenetfitchburg.net](http://www.carenetfitchburg.net)

Free and confidential services for women

### **Child /Infant Safety/ CPR Class**

242 Green Street

Gardner MA 01440

978-632-3420

[www.heywood.org](http://www.heywood.org)

Provides children and infant CPR and First Aid classes.

### **Children's Medical Security Plan/Healthy Start**

1-800-841-2900

[www.cmspkids.com](http://www.cmspkids.com)

Applications for children and teens who do not have health coverage & comprehensive prenatal care for low income uninsured women & their infants under one year in order to improve health outcomes & their babies.

### **Early Intervention Partnership Program (EIPP)**

100 Erdman Way

Leominster MA 01453

978-401-3892

Servieds for pregnant and post-partum women and children.

### **Early Pregnancy Class**

242 Green Street

Gardner MA 01440

978-632-3420

[www.heywood.org](http://www.heywood.org)

Provides childbirth education.

### **Lamaze Classes**

242 Green Street

Gardner MA 01440

978-632-3420

[www.heywood.org](http://www.heywood.org)

Provides breastfeeding and childbirth education, first aid instructions, lamaze classes, infant child safety and CPR

# Legal Assistance

---

## *Services/Support*

### **Child Support Enforcement Unit (Mass. Department of Revenue)**

800-332-2733

[www.dor.state.ma.us](http://www.dor.state.ma.us)

Forms available online to allow the DOR to enforce your child support order.

### **Massachusetts Justice Project**

405 Main Street, Suite 300

Worcester MA 01608

888-427-8989

508-831-9888

The Massachusetts Justice Project is a federally funded legal services hotline. We provide legal advice in only the following matters: landlord and tenant issues, evictions, divorce and custody cases, domestic violence, foreclosure, debt collection and bankruptcy, employment, and the termination or denial government benefits such as welfare or veterans benefits, SSI or social security, unemployment, section 8 and public housing, food stamps, mass health and Medicare.

### **The Legal Assistance Corporation of Central MA**

76 Summer Street

Fitchburg MA 01420

800-649-3718

[www.laccm.org/](http://www.laccm.org/)

LACCM is the state-funded civil legal aid program for Central Massachusetts. LACCM provides free civil legal assistance to low-income and elderly residents of Worcester County and specializes in elder law, government benefits, eviction defense, immigration law, housing and employment discrimination, and family law matters affecting domestic violence victims.

### **The Legal Assistance Corporation of Central MA**

405 Main Street, 4th Floor

Worcester MA 01608

800-649-3718

508-725-3718

[www.laccm.org/home](http://www.laccm.org/home)

LACCM is the state-funded civil legal aid program for Central Massachusetts. LACCM provides free civil legal assistance to low-income and elderly residents of Worcester County. With over twenty advocates, LACCM specializes in elder law, government benefits, eviction defense, immigration law, housing and employment discrimination, and family law matters affecting domestic violence victims.

### **Western Mass. Legal Service**

127 state Street 4th Floor

Springfield MA 01103

413-781-7814

413-536-2420

[www.wmls.org/](http://www.wmls.org/)

WMLS' mission is to help clients meet their basic human needs through advice, representation and education in a manner that encourages their autonomy and respects their dignity.



# Mental Health Services

## Children & Adolescents

### Children's Friend, Inc.

21 Cedar Street  
Worcester MA 01609  
508-753-5425  
www.childrensfriend.org

Diagnostic, treatment & medication services for children with disruptive behavior disorders. Support & training for parents

### Children's Friends Society

21 Cedar Street  
Worcester MA 01609  
508-753-5425  
www.childrensfriend.org

Diagnostic, treatment & medication services for children and adolescents with disruptive behavior disorders. Support & training for parents

### Flying High Farm

615 Leominster Road  
Lunenburg MA 01462  
978-582-7103  
www.flyinghighfarm.com

Flying High Farm incorporates the therapeutic power of ponies toward optimizing the behavioral, emotional and social growth of our youth. Private insurance. CMSP is accepted

### University of Massachusetts Medical Center Dept. of Developmental and Behavioral Pediatrics

55 Lake Avenue North  
Worcester MA 01655  
508-856-3028

One Clinic for children with developmental issues; birth -10 yrs. Handles wide range of problems

## Drug/Alcohol Abuse

### LUK Inc.: STEP (strengthen transition empower persevere)

545 Westminster Street  
Fitchburg MA 01420  
(800) 579-0000  
www.luk.org

A program to address the needs of victims of operating under the influence (OUI) crashes. Offers brief counseling, crisis intervention, support groups, referral, information, advocacy, outreach, and education.

## Mental Health

### Bolton Psychotherapy Association

563 Main Street  
Bolton MA 01740  
978-779-6505

### Center for Living and Working

76 Summer Street  
Fitchburg MA 01420  
978-345-1568  
opsearch@centerlw.org

Skill training, advocacy, peer counseling I&R for people with disabilities.

### Children's Aid and Family Services

110 Erdman Way  
Leominster MA 01453  
978-345-4174

Family counseling, divorce mediation, child custody planning and more. An affiliate of the Seven Hills Foundation.

### Clinical and Support Options

491 Main Street  
Athol MA 01331  
978-249-9490  
www.csoinc.org

### Community Healthlink - Lipton Center

100 Erdman Way  
Leominster MA 01453  
978-840-9329  
www.communityhealthlink.org

Counseling services for children and adults

### Community Healthlink - Lipton Center

45 Summer Street  
Leominster MA 01453  
978-534-6116  
800-977-5555  
www.communityhealthlink.org

Comprehensive mental health services. Individual, family, group counseling.

### Family Services of Central Mass.

31 Harvard street  
Worcester MA 01609  
508-756-4646

Individual, couple, family counseling. Family life education workshops

# Mental Health Services

---

## First Call for Help

484 Main Street  
Worcester MA 01608  
508-755-1233  
www.mass211.org

### MASS211

Information and referral help line providing information on community, health and human services.

## Healthy Directions at HealthAlliance Home Health & Hospice

Burbank Campus  
Fitchburg MA 01420  
978-348-1702

Support and education to pregnant women and parents of children up to age three.

## Mass. Department of Children and Families

140 High Street, 4th Floor  
Springfield MA 01105  
413-452-3200

The Department's vision is to ensure the safety of children in a manner that holds the best hope of nurturing a sustained, resilient network of relationships to support the child's growth and development into adulthood.

Greenfield: 143 Munson St., Unit 4 (413-775-5000 or 800-842-5905)  
Worcester: 25 Winthrop St., Ste. 300 (508-929-2130)  
Leominster: 690 Mechanic St., Ste. (978-466-1500 or 800-479-6111)

## Mass. Department of Developmental Services

435 Main Street  
Fitchburg MA 01420  
978-342-2140  
www.state.ma.us/dmr

## Mass. Department of Mental Health

45 Summer Street  
Leominster MA 01453  
978-534-3372  
www.state.ma.us/dmh

## Multicultural Wellness Center

515 Main Street 3rd Floor  
Fitchburg MA 01420  
978-343-3336  
info@multiculturalwellness.org

## North Central Alcoholism

316 Central Street  
Gardner MA 01440  
978-632-1736  
Alcoholism treatment program

## Parents Helping Parents (parental stress line)

800-882-1250  
800-632-8188

## Psychiatry and Family Counseling

52 Cedar Street  
Worcester MA 01603  
508-752-5191

Serves children, adolescents, adults, and families within Central Mass.

Leominster Office: 25 Mohawk Drive (978-840-1100)

## Riverside Counseling

76 Summer Street  
Fitchburg MA 01420  
978-345-6729

Counseling services for children and adults

## The Elise Lindsay Healing Center

74 Woodland Avenue  
Gardner MA 01440  
978-630-3455

Provides bereavement counseling and support services, violence and abuse services, counseling and adolescent/youth counseling

## Youth Opportunities Upheld (YOU, Inc.)

205 School Street  
Gardner MA 01440  
978-632-2120  
www.youinc.org

Counseling services for children & families.

## Youth Opportunities Upheld (YOU, Inc.)

205 School Street  
Gardner MA 01604  
508-849-5600 x 277  
987-632-2321  
www.youinc.org

Full range of services of behavior management, parenting, anxiety and stress, school problems, fire setting, etc..

# Mental Health Services

---

## *Self Help Groups*

### **Alcoholic Anonymous**

800-570-4562  
[www.aa.org](http://www.aa.org)

### **Debtors Anonymous**

800-421-2383  
[www.debtorsanonymous.org](http://www.debtorsanonymous.org)

### **Gamblers Anonymous**

855-222-5542  
[www.gamblersanonymous.org](http://www.gamblersanonymous.org)

### **Narcotics Anonymous**

877-589-4611  
[www.centralmassna.org](http://www.centralmassna.org)

# Senior Services

---

## COAs/Centers/Clubs

### Ashburnham Council on Aging

32 Main Street 2nd Floor  
Ashburnham MA 01430  
978-827-5000  
www.ashburnham-ma.org

Offers programs and services for senior citizens, including transportation to medical appointments, social events and programs. Lunch program for seniors is at the Senior Center or by home delivery. Forever Young Club: Social club for seniors age 55 and over who live or have lived in Ashburnham. Meets on the first Monday of each month.

### Barre Council on Aging

557 South Barre Road  
Barre MA  
978-355-5004  
www.townofbarre.com

Meets first Wednesday of each month (7 p.m. at Woods Memorial Library).

### Clinton Council on Aging

242 Church Street  
Clinton MA 01510  
978-365-9416

Geriatric services, health services, social services

### Fitchburg Senior Center

14 Wallace Ave.  
Fitchburg MA 01420  
978-345-9598  
www.fitchburgseniorcenter.org

### Gardner Council on Aging

294 Pleasant Street  
Gardner MA 01440  
978-632-4067  
www.gardner-ma.gov

Senior ride program, elder law, counseling, recreational activities, nutrition sites

### Holden Senior Center

1130 Main Street  
Holden MA 01520  
508-210-5570

Nutrition, recreation, arts & crafts.

### Lancaster Council on Aging

695 Main Street  
Lancaster MA 01523  
978-733-1249 1106  
www.ci.lancaster.ma.us

### Leominster Council on Aging

5 Pond Street  
Leominster MA 01453  
978-534-7511  
www.leominster-ma.gov

Congregate meals, counseling, elder law, recreation activities

### Lunenburg Council on Aging

25 Memorial Drive  
Lunenburg MA 01462  
978-582-4166  
978-582-4167  
sdoherty@lunenburgonline.com

Elder law, nutrition site, counseling, recreation activities

### MOC Elder Services, Senior Center

14 Wallace Street  
Fitchburg MA 01420  
978-345-8501 x 01

### Princeton Council on Aging

18 Boylston Ave.  
Princeton MA 01541  
978-464-5977  
www.town.princeton.ma.us

Nutrition site, counseling, recreation activities, elder law

### Sterling Council on Aging

1 Park Street  
Sterling MA 01564  
978-422-3032  
www.town.sterling.ma.us

Senior ride program, elder law, counseling, recreational activities, nutrition sites

### Westminster Council on Aging

127 Main Street POBox 212  
Westminster MA 01473  
978-874-7402  
www.westminster-ma.org

Senior ride program, elder law, counseling, recreational activities, nutrition sites.  
Westminster Seniors Friendship Club: 978-874-2339 (for seniors 55 years and older in Westminster and neighboring towns.) Have regular meetings and special events. Meet at St. Edwards Church in Westminster.

# Special Needs Services

---

## **ADHD**

### **ADHD Parent Support Groups**

Concord MA  
978-369-1779

Support groups for Parents of ADHD Children. Works with elementary age children.

### **Metrowest CHADD**

508-302-2425  
www.chadd.net/467

Offers information about local resources and support groups dealing with ADD.

### **National Resource Center on AD/HD**

800-233-4050

Can answer questions about educational rights, treatment options, diagnostic procedures and how to locate support and procedures.

## **Asperger's**

### **Asperger's Association of N.E.**

51 Water Street #206  
Watertown MA 02472  
617-393-3824  
www.aane.org

Provides information, referrals, educational programs and support for individuals with Asperger Syndrome and their families.

### **Asperger's Support Group**

Worcester/Auburn MA  
508-832-7790

Support group for individuals with Asperger's symptoms and their families.

## **Autism**

### **Autism Alliance of Metrowest**

14 East Central St., RT 13  
Natick MA 01760  
508-652-9900  
www.autismalliance.org

Provide families with information, education and support.

### **Autism Resource Center of Central Massachusetts**

71 Sterling St.  
West Boylston MA 01583  
508-835-4278  
www.arccm.org

Providing information, library, hotline, technology assistance, networking and education

### **Autism Society of America, Massachusetts Chapter**

47 Walnut St.  
Wellesley Hills MA 02481  
781-237-0272 x17  
asamasschapter@hotmail.com

Support and information for parents of children with PDD/Autism

### **Doug Flutie Jr. Foundation for Autism**

615 Concord Street  
Framingham MA 01702  
508-270-8855  
www.dougflutiejrfoundation.org

Funding available for financially disadvantaged families who need assistance caring for their child on the autism spectrum.

### **Parents of Children with PDD/Autism**

564 Main Street (ARC)  
Fitchburg MA  
978-342-2670

Support group through ARC, Fitchburg

## **Birth Defects**

### **Easter Seals**

484 Main St., 600th Floor  
Worcester MA 01608  
508-757-2756  
www.eastersealsma.org

Services for people of all ages

### **March of Dimes**

508-366-9066  
www.marchofdimes.org

# Special Needs Services

## *Camps*

### **Camp Harrington**

320 Sewall Street  
Boylston MA 01505  
508-869-0586  
508-869-6171  
slockney@ymcaofcm.org

Inclusive day camp for children ages 5-14 yrs.

### **Camp Kingsmont**

c/o Hampshire College, 893 West street  
Amherst MA 01002  
877-348-2267  
703-288-0047  
info.@campkingsmont.com

Weight loss camp; traditional summer camp in nutrition and fitness environment.

Winter: 195 Main Street, Great Barrington, MA :01230

### **Hole-In-The-Wall Gang Camp**

565 Ashford Center Road  
Ashford CT 06278  
860-429-3444

Overnight summer camp for children with cancer. Founded and supported by the actor Paul Newman. Free of charge.

## *Diabetes*

### **Barton Center For Diabetes Education**

Clara Barton Road, Box 356  
North Oxford MA 01537  
508-987-2056

Two residential summer camps of children with diabetes, boys & girls. Also day camp and adventure camp.

## *Early Intervention*

### **Community Healthlink Lipton Center: Early Intervention**

100 Erdman Way  
Leominster MA 01453  
www.communityhealthlink.org

Serves families with children birth to three years of age; developmental assessments, therapies, children's services

## *Equipment*

### **Assistive Technology Resource Center**

Worcester Polytechnic Institute  
100 Institute Rd.  
Worcester MA 01609  
508-831-5217  
508-831-5498  
atrc@wpi.edu

### **Pass It On, Inc.**

PO Box 2120  
Mashpee MA 02649  
508-477-6966  
800-267-6768  
<http://passitonforkids.org>

Used and recycled medical equipment and assistive technology for children with special needs.

## *Family Support*

### **Seven Hills Family Support Center**

1460 John Fitch Highway  
Fitchburg MA 01420  
(978) 602-8711

[www.sevenhills.org/programs/family-support-centers](http://www.sevenhills.org/programs/family-support-centers)

At the Family Support Centers, our expertise includes: Individualized support and advocacy; Education on systems of care and funding; Information and referral; DESE/DDS wrap-around services; Agency with Choice self-directed funding model; Community Connections, sports & recreation; Friendship and relationship-building; Transition to adult supports; and Assistive Technology.

# Special Needs Services

---

## *Intellectual*

### **Best Buddies Massachusetts**

617-778-0522  
www.bestbuddiesma.org

The mission of Best Buddies is to enhance the lives of people with intellectual disabilities through opportunities for one-to-one friendships and integrated employment.

### **Learning Disabilities Program**

Children's Hospital  
Boston MA  
617 355-6391  
www.childrenshospital.org

Offers information, assessment, educational testing and treatment for children with learning disabilities.

### **The Summer Institute for the Gifted at Amherst College**

866-303-4744  
www.cgp-sig.com  
Residential co-ed academic camp for gifted children. 4th-11th grade.

## *Mental Health*

### **Centro Las Americas/ DDS Service**

437 Main Street  
Fitchburg MA 01420  
(978) 343-5836  
www.centrolasamericas.org

Offers Developmental Disability Services, Adult Family Care, Elder Services, Behavioral Health Services, and Children, Family, & Community Services.

### **The ARC Opportunity in North Central Mass**

564 Main Street  
Fitchburg MA 01420  
(978) 343-6662

## *Public School Special Education Offices*

### **Ashburnham-Westminster Regional School District**

11 Oakmont Drive  
Ashburnham MA 01430  
978-827-1434  
www.awrsd.org

### **Athol Royalston Public Schools**

1062 Pleasant Street  
Athol MA 01331  
978-249-2403  
www.arrsd.org

### **Ayer Shirley Regional Public Schools**

141 Washington Street  
Ayer MA 01432  
978-779-8600 x 491  
www.asrsd.org

### **Berlin-Boylston Regional School District**

215 Main Street  
Boylston MA 01505  
508-869-2837

### **Clinton Public Schools**

150 School Street  
Clinton MA 01510  
978-365-4200  
www.clinton.k12.ma.us

### **Fitchburg Public Schools**

376 South Street  
Fitchburg MA 01420  
978-345-3200  
www.fitchburg.k12.ma.us

### **Gardner Public Schools**

70 Waterford Street  
Gardner MA 01440  
978-632-1000  
www.gardnerk12.org

### **Harvard Public Schools**

Bromfield House, 39 Mass. Ave.  
Harvard MA 01451  
978-456-4140  
www.psharvard.org

# Special Needs Services

---

## **Leominster Public Schools**

24 Church Street  
Leominster MA 01453  
978-537-7700  
[www.leominster.mec.edu](http://www.leominster.mec.edu)

## **Lunenburg Public Schools**

1401 Massachusetts Avenue  
Lunenburg MA 01462  
978-582-4122  
[www.lunenburgonline.com](http://www.lunenburgonline.com)

## **N. Quabbin Comm Coalition**

427 Main Street  
Athol MA 01331  
978-249-3703  
[www.nqcc.org](http://www.nqcc.org)

## **Nashoba Regional School District**

50 Mechanic St.  
Bolton MA 01740  
978-779-0539 x 3013  
[www.nrsd.net](http://www.nrsd.net)

## **Quabbin Regional School District**

872 South Street  
Barre MA 01005  
978-355-4668 x 8517  
[www.qrsd.org](http://www.qrsd.org)

## **Wachusett Regional School District**

1745 Main Street  
Jefferson MA 01522  
508-829-1670  
[www.wrsd.net](http://www.wrsd.net)

## **Resources**

### **A Parent's Guide to Special Education**

[www.fcsn.org/parentguide/pgintro.html](http://www.fcsn.org/parentguide/pgintro.html)

### **Family Information Needs Collection**

Worcester Public Library 3 Salem Square  
Worcester MA 01608  
508-799-1655  
508-799-1724  
[www.worcpublic.org](http://www.worcpublic.org)  
Collection of books, videos, talking on loan to local families.

### **Federation for Children with Special Needs**

1135 Tremont St., 4th Floor  
Boston MA  
800-331-0688  
617-236-7210  
[www.FCSN.org](http://www.FCSN.org)  
The Federation provides information, support, and assistance to parents of children with disabilities.

### **Greater Athol Area Advocates for Families with Special Needs**

359 Main Street  
Athol MA 01331  
978-249-4052  
800-834-2333  
[www.assn.org](http://www.assn.org)



# Special Needs Services

---

## *State Agencies*

### **Mass. Advocacy Center**

25 Kingston Street 2nd Floor  
Boston Ma 02111  
617-357-8431  
[www.massadvocates.org](http://www.massadvocates.org)

Advocacy for children needing special education services.

### **Mass. Department of Developmental Services**

Glavin Regional Center 214 Lake St.  
Shrewsbury MA 01545  
508-845-9111

### **Mass. Department of Education**

75 Pleasant Street  
Malden MA 02148  
781-338-3000  
[www.doe.mass.edu/SPED](http://www.doe.mass.edu/SPED)

### **Mass. Department of Mental Health**

255 Staniford Street  
Boston Ma 02114  
617-626-8000  
[www.mass.gov/dmh](http://www.mass.gov/dmh)

### **Mass. Development Disabilities Council**

1150 Hancock St., Suite 300  
Quincy MA 02169  
617-770-7676  
617-770-9499      tty  
[www.mass.gov/mddc](http://www.mass.gov/mddc)

Promotes opportunities for people with developmental disabilities and their families to enhance independence, productivity, integration and inclusion.

# Town Information

---

## Government

### Ashburnham Town Hall

32 Main Street  
Ashburnham MA 01430  
978-827-4100  
www.ashburnham-ma.org

### Athol Town Hall

584 Main Street  
Athol MA 01331  
978-249-4551  
www.athol-ma.gov

### Barre Town Hall

40 West Street, P.O.Box 418  
Barre MA 01005  
978-355-5003  
clerk@townofbarre.com

### Bolton Town Hall

663 Main Street  
Bolton MA 01740  
978-779-2297  
www.townofbolton.com

### Clinton Town Hall

242 Church Street  
Clinton MA 01510  
978-365-4119  
www.clintonma.gov

### Fitchburg City Hall

166 Boulder Dr#108  
Fitchburg MA 01420  
978-829-1820  
www.ci.fitchburg.ma.us

### Gardner City Hall

95 Pleasant Street,Rm121  
Gardner MA 01440  
978-630-4058  
www.gardner-ma.gov

### Hardwick Municipal Office Building

307 Main Street, P.O. Box 575  
Gilbertville MA 01031  
413-477-6197  
admin@townofhardwick.com

### Hubbardston Town Hall

7 Main Street  
Hubbardston MA 01452  
978-928-1400 202  
clerk@hubbardstonma.us

### Lancaster Town Hall

695 Main Street  
Lancaster MA 01523  
978-365-3326 ext.1013  
www.ci.lancaster.ma.us

### Leominster City Hall

25 West Street  
Leominster MA 01453  
978-534-7536  
www.leominster-ma.gov

### New Braintree Town Hall

20 Memorial Dr  
New Braintree MA 01531  
508-867-2071  
www.newbraintree.org

### Oakham Town Hall

2 Coldbrook Road  
Oakham MA 01068  
508-882-5549 305

### Petersham Town Hall

3 South Main Street  
Petersham MA 01366  
978-724-3353  
petershamtownclerk@verizon.net

### Royalston Town Hall

Whintney Hall. 5 School Street  
S. Royalston MA  
978-249-0493  
townclerk@royalstonma.gov

### Westminster Town Hall

11 South Street  
Westminster MA 01473  
978-874-7436  
www.westminster-ma.org

## Town Information

---

### **Winchendon Town Hall**

109 Front Street  
Winchendon MA 01475  
978-297-2766  
[www.townofwinchendon.com](http://www.townofwinchendon.com)  
closed on fridays

### *News*

### **Clinton Item**

156 Church Street  
Clinton MA 01510  
978-368-0176  
[www.clintonitem.com](http://www.clintonitem.com)

### **Clinton Mass. Online**

[www.clintonmass.com](http://www.clintonmass.com)

### **Fitchburg Pride**

PO Box 951  
Fitchburg MA 01420  
978-534-6006  
[www.fitchburgpride.com](http://www.fitchburgpride.com)

### **Leominster Champion**

285 Central Street, Ste. 202B  
Leominster MA 01453  
978-534-6006  
[www.leominsterchampion.com](http://www.leominsterchampion.com)

### **Winchendon Online Newsletter**

[www.townofwinchendon.com](http://www.townofwinchendon.com)

# Veterans Services

---

## **General**

### **Coming Together Around Military Families**

[www.zerotothree.org](http://www.zerotothree.org)

A partnership between Zero to Three and the US Department of Defense which brings trainings to military families which help young children and families experiencing trauma, grief or loss as the result of a service member's deployment.

### **Military OneSource**

800-342-9647

[www.militaryonesource.com](http://www.militaryonesource.com)

A resource for military members, spouses and families, available 24/7 that is prepaid by US Department of Defense. Offers help with childcare, relocation, financial and legal concerns as well as everyday issues and more.

### **National Military Family Association (NMFA)**

2500 North VanDorn Street, Suite 102

Alexandria VA 22302

[info@militaryfamily.org](mailto:info@militaryfamily.org)

An organization dedicated to improving lives of offers and enlisted families in all branches of the service.

### **Veteran Hospice Homestead**

69 High Street

Fitchburg MA 01420

978-353-0234

[www.veteranhomestead.org](http://www.veteranhomestead.org)

Provides transitional housing, homeless shelter for the terminally ill. Includes case management, advocacy, food, basic medical and mental health assistance and peer counseling.

### **VISN 1: VA New England Health Care System**

200 Spring Road, Building 61

Bedford MA 01730

781-687-4821

Provides quality healthcare and related services to eligible New England veterans at its 8 medical centers and 35 outpatient clinics.

## **Local Veterans Agent**

### **Barre Veterans Services**

352 Town Farm Road

Barre MA 01005

978-355-5024 8

### **Veterans Services Officer**

32 Main Street

Ashburnham MA 01430

978-630-4017 ext8

### **Veterans Services Officer**

14 Wallace Ave

Fitchburg MA 01420

978-829-1797

### **Veterans Services Officer**

95 Pleasant Street, Room 13

Gardner MA 01440

978-630-4017

### **Veterans Services Officer**

25 West Street

Leominster MA 01453

978-534-7538

### **Veterans Services Officer**

Town Hall, 109 Front Street

Winchendon MA 01475

978-297-0500

# Veterans Services

---

## *State*

### **Massachusetts Department of Veterans Services**

600 Washington Street, Floor 7th

Boston MA 02111

888-844-2838

617-210-5480

MDVS@vet.state.ma.us

DVS serves as an advocate for Massachusetts veterans and their families in securing federal compensation and other benefits.

### **Massachusetts Veterans Memorial Cemetery**

111 Glenallen Street

Winchendon MA 01475

978-297-9501

Cemetery serving Massachusetts' eligible veterans and their families. There is no fee for a veteran's burial and a nominal fee for burial of spouses and qualified dependents

### **Statewide Advocacy for Veterans Empowerment (SAVE)**

600 Washington Street, Floor 7th

Boston MA 02111

888-844-2838

617-210-5743

The DVS and MA Department of Public Health offer this program for the prevention of suicide and mental health awareness.

# Index of Organizations

## Early Education and Care

### *Early Intervention*

Children's Services  
Community Healthlink Lipton Center - Early Intervention  
Criterion Wachusett Early Intervention Program  
Early Intervention & Family Support Programs UMASS  
Family TIES of Massachusetts  
Minuteman ARC for Human Services

### *Head Start*

Clinton Head Start Program  
MOC Child Care and Head Start Services  
Winchendon Head Start Program

### *Local Early Education & Care (EEC) Contacts*

Ashburnham-Westminster Community Partnership for Children  
Clinton Community Partnerships for Children  
Leominster Project Apples, CFCE  
MOC Community Partnership for Children/Fitchburg  
MOC Community Partnership for Children/Quabbin  
MOC Community Partnership Gardner  
MOC Early Literacy and CFCE  
Nashoba Community Partnerships for Children  
Valuing Our Children Athol/Royalston  
Wachusett Coordinated Family & Community Engagement Program  
Winchendon Community Partnerships for Children

### *Parent/Child Programs*

Clinton/Lancaster Parent Child Home Program  
Fitchburg Parent Child Home Program  
Franklin Community Action Corporation  
Leominster Parent Child Home Program  
Lunenburg Family , Community Engagement  
North Quabbin Family Network, Valuing Our Children  
North Worcester County Healthy Families  
Quabbin Parent Child Home Program

### *Play Groups*

Bolton Play Group  
Fitchburg Community Partnership  
Gardner Community Play Group  
Little Learners Book Club  
Little Seedlings: Project Apples, CFCE  
Play School (Clinton Community Partnerships for Children)  
Stow Area Parent Network  
The Moms Club of Lancaster & Sterling

### *Resources & Referrals*

Child Care Connection  
Child Care Resources

### *State*

Mass. Department of Early Education & Care

## Education/Training: Adults

### *Adult Education*

ALFA (Adult Learning/Fitchburg Area)  
Cleghorn Neighborhood Center  
Clinton Adult Learning Center  
Minuteman ARC for Human Services  
Mount Wachusett Community College Devens Learning Center

### *Career Training*

Career Center of North Central Massachusetts  
Franklin County Community Development Corporation  
Franklin/Hampshire Career Center  
North Quabbin School to Careers Partnership  
Workforce Central Career Center

### *Colleges/Universities*

Anna Maria College  
Fitchburg State University  
Mount Wachusett Community College  
N. Quabbin Comm Action Corp

### *Continuing Education*

Assabet After Dark  
Montachusett Regional Vocational Technical Continuing Education

## Education: Private Schools

### *Private School*

Applewild  
Browning Elementary / South Lancaster Academy  
Cottage Hill Academy  
Cushing Academy  
New River Academy  
Notre Dame Preparatory School  
Our Lady of Holy Rosary Elementary School  
Sacred Heart of Jesus Elementary School  
St. Anna's School  
St. Anthony's Elementary School  
St. Bernard's Central Catholic High School  
St. Bernard's Elementary School  
St. Leo's School  
The Village School  
Trivium School  
Wachusett Hills Christian School  
Winchendon School

## Education: Public Schools

### *Districts & Charter Schools*

Ashburnham-Westminster Regional School District  
Athol Royalston Public School District  
Ayer Shirley Regional Public Schools  
Clinton Public Schools  
Fitchburg Public Schools  
Francis W. Parker Charter Essential School  
Gardner Public Schools  
Leominster Public Schools  
Narragansett Regional Public Schools  
Nashoba Regional Schools  
Quabbin Public School District

Sizer School, a North Central Charter Essential School  
Wachusett Regional School District  
Winchendon Public Schools

### ***Vocational***

Assabet Valley Regional Technical High School  
Baypath Regional Vocational School  
Montachusett Regional Vocational Technical School

## **Education: Special Education Programs**

### ***Special Needs***

Caldwell Alternative School  
Caldwell Elementary School  
CAPS Alternative Jr. Sr. High  
CAPS Deaf/Hard of Hearing Program (DHHP)  
CAPS Educational Collaborative  
CAPS Gateway  
CAPS Horizons I  
CAPS Horizons II  
CAPS Odyssey  
CAPS Rainbow  
CAPS Sr. Pathways  
Devereux School  
Dr. Franklin Perkins School  
Eagle Hill School  
Ellen Bigelow School  
FLLAC Collaborative  
Lipton Academy School  
RFK Lancaster School  
Stetson School

## **Emergency Support**

### ***General***

American Red Cross  
Care Service Project  
Catholic Charities  
Catholic Charities, Refugee Resettlement Program  
Christ Episcopal Church  
Community Services of SDA  
Distrigas Application  
Gardner Community Action Committee  
GVNA Community Services  
Jewish Family Services of Metrowest  
Lutheran Social Services of New England  
Mass. Department of Transitional Assistance  
Massachusetts Alliance of Portuguese Speakers  
Refugee and Immigrant Assistance Center  
Salvation Army Corps & Community Centers  
St Vincent De Paul Society - Sacred Heart Church  
Urban Missionaries of Our Lady of Hope  
WHEAT/United Way Community Services  
Winchendon Community Action Council

### ***Housing/Shelters***

Department of Housing and Community Development  
Friendly House Shelter  
Horizons for Homeless Children  
Lutheran Community Services of Southern New England, Inc.

Massachusetts Department of Children & Families  
Montachusett Interfaith Hospitality Network  
People In Peril Shelter

### ***Utilities***

Energy & Environmental Services MOC  
Fuel Assistance/Low Income Heating Assistance  
Good Neighbor Energy Fund  
New England Farm Workers Council (NEFWC)  
North Quabbin Energy

### ***Violence/Abuse***

Battered Women's Resources, Inc.  
Battered Women's Shelter & Support  
Battered Women's Shelters and Services  
Childhelp USA National Child Abuse Hotline  
Community Healthlink/Worcester Youth & Family Services  
Daybreak Resources for Women and Children, Inc  
Domestic Violence Ended (Dove) Youth Hotline  
Domestic Violence Shelter & Support Hot Line  
Enough Abuse/Mass. Citizens for Children (MassKids)  
Mass. Department of Children and Families (DCF)  
Mass. Society for the Prevention of Cruelty to Children (MSPCC)  
National Domestic Violence Hot Line  
Parent & Children's Services/ Parental Stress Line  
Rape Crisis Center  
Rape Crisis Center, Central MA  
YOU, Inc.

## **Enrichment/Recreation**

### ***Adults***

Adult Mixed Softball Association  
Central MA Basketball  
North Central Basketball  
Semi Pro Baseball

### ***Camps***

Camp Harrington  
Camp Kidoodles  
Camp Putnam  
Camp Sabra PreK  
Cricket Corner Camp/Orchard Hills Athletic Club  
Davis Farmland/Junior Farmer Day Camps  
Mass Audubon Sanctuary Camps

### ***Historical***

Ashburnham Historical Society  
Barre Historical Society  
Bolton Historical Society  
Clinton Historical Society  
Fitchburg Historical Society  
Lancaster Historical Commission  
Leominster Historical Society  
Stow Historical Commission  
Westminster Historical Commission  
Westminster Historical Society  
Winchendon Historical Society

### ***Libraries/Literacy Services***

Audio Journal

Beals Memorial Library  
Bigelow Free Public Library  
Fitchburg Public Library  
Forbush Memorial Library  
Leominster Public Library  
Levi Heywood Memorial Library  
Literacy Volunteers of Massachusetts  
Massachusetts Adult Literacy Hotline  
Stevens Memorial Library  
Thayer Memorial Library

### ***Museums***

Currier Museum of Art  
DeCordova Museum and Sculpture Park  
Discovery Museums of Acton  
Eco Tarium  
Eric Carle Museum of Picture Book Art  
Fitchburg Art Museum  
Frederick Historical Piano Collection  
Fruitlands Museum  
Gallery of African Art  
Museum of Russian Icons  
The Gardner Museum  
Top Fun Aviation Toy Museum  
Wallace Civic Center  
Worcester Art Museum

### ***Parks & Recreation Departments***

Bolton Parks and Recreation  
Clinton Parks and Recreation  
Clinton Parks and Recreation Department  
Fitchburg Recreation Department  
Leominster Recreation Department  
Sterling Recreation Department

### ***Parks/Farms***

Anascomet Beach  
Ashburnham Conservation Trust  
Barre Falls Dam  
Bolton Conservation Trust  
Coggshall Park  
Coolidge Park  
Crocker Pond Beach and Recreation Area  
Crow Hill/Leominster State Forest  
Davis Farmland  
Dunn Pond State Park  
Gardner Heritage State Park  
Hager Park  
Lake Dennison Recreation Area  
Marshall Farm  
Midstate Trail  
Miller's River  
Monument Park  
Moore State Park  
Mount Watatic  
Otter River State Park  
Overlook Farm/Heifer International  
Rutland State Park  
Sholan Farms  
Tower Hill Botanic Garden  
Wachusett Mountain State Reservation

### ***Pools***

Greenwood Memorial Pool Complex  
Philip J. Weihn Memorial Pool

### ***Service Organizations***

Ashburnham Lions Club  
Ashburnham-Westminster Rotary Club  
Friends of Forbush Memorial Library  
Westminster Lions Club  
Westminster Women's Club

### ***Theatre/Music***

Barre Players Theatre  
Clinton Community Theatre  
Cornerstone Performing Arts Center  
Stratton Playhouse  
Thayer Symphony Orchestra  
Theatre at the Mount (MWCC)  
Wachusett Music  
Westminster Town Band

### ***YMCA***

YMCA - Greendale Family Branch  
YMCA - Montachusett Regional  
YMCA - Wendell P Clark Memorial

### ***Youth***

American Little League  
Ashburnham Little League  
Athol-Mahar Pop Warner  
Babe Ruth League  
Barre Youth Commission  
Boy Scouts of America  
Boys & Girls Club of North Central Mass.  
Fitchburg Pop Warner  
Football AFY  
Gardner Little League  
Giguere Gymnastics School  
Girl Scouts of America  
Greater Gardner Youth Hockey  
Gymnastics Learning Center  
Lassie Softball League  
Leominster DEK Hockey  
Leominster Pop Warner  
Leominster Youth Soccer Association  
Little League  
Meridian Gymnastics & Youth Fitness  
Nashoba Baseball  
National Little League  
North Leominster Little League  
North Middlesex Pop Warner  
Oakmont Outlaws Soccer Club  
Oakmont Pop Warner Football  
Oakmont Youth Basketball League  
Oakmont Youth Soccer  
Pop Warner Football & Cheerleading  
Sterling Academy of Gymnastics  
Sting Lacrosse  
Twin City Youth Hockey  
Veterans Memorial Arena  
Westminster Little League



Winchendon Pop Warner  
Wrestling: Leominster Youth Commission

## **Family Services**

### ***Food Assistance***

Barre WIC office. Barre Family Health Center  
Clinton WIC Office/ WHEAT office  
Gardner WIC office  
Leominster WIC office  
Winchendon WIC office (CAC)

### ***General***

Adoptive Families Together  
Anti-Defamation League (ADL) Jewish Philanthropies  
Children's Aid & Family Service, Inc. (CAFS)  
Community Action of the North Quabbin, Inc.  
Domestic Violence Ended (DOVE)  
Family Services of Central Mass.  
Jewish Family Services  
Montachusett Opportunity Council, Inc.  
North Quabbin Community Coalition  
Springfield Partners for Community Action, Inc.  
United Neighbors of Cleghorn (Cleghorn Neighborhood Center)  
Worcester Community Action Council, Inc. (WCAC)  
Youth Opportunities Upheld (YOU, Inc.)

### ***Grief Support Group***

Community Birth Loss Support Group  
Compassionate Friends

### ***Health Care***

UMASS Memorial Health Care/Family Education Center - Baby-Sitting Program

### ***Housing/Shelters***

Athol Housing Authority  
Barre Housing Authority  
Clinton Housing Authority  
Fitchburg Housing Authority  
Gardner Housing Authority  
Greater Gardner Community Development Corporation  
Habitat for Humanity, North Central Massachusetts  
Lancaster Housing Authority  
Leominster Housing Authority  
Our Father's House, Inc.  
RCAP Solutions, Inc.  
Winchendon Housing Authority

### ***Mental Health***

Call2Talk  
Heywood Hospital  
Milford Regional Medical Center  
South Bay Mental Health Center  
The Lipton Center (run by Community HealthLink)

### ***Parent/Child Programs***

Athol Parent Child Home Program  
Fitchburg Parent Child Home Program  
Franklin Community Action Corporation  
La Leche League (Worcester Chapter)  
Lunenburg Family Network, Eagle House

North Quabbin Family Network, Valuing Our Children  
North Worcester County Healthy Families  
Parents Helping Parents  
Peter Pan Center  
Play School (Clinton Community Partnerships for Children)  
Quabbin Parent Child Home Program  
The House of Peace & Education, Inc. (HOPE)

### ***Pregnant Women & Children***

Ayer WIC Office  
Babysitting Program at Clinton Hospital  
North Central WIC Program

## **Family Services: Mental Health**

### ***Emergency***

Central Region Department of Children and Families  
Child-At-Risk Hotline  
Mass. Department of Children and Families  
North Central Department Of Children and Families

### ***General***

Community Healthlink/Worcester Youth & Family Services  
Kid's Net Connection MSPCC  
LUK Inc.  
North Central Human Services, Inc.  
YANA -You Are Not Alone

## **Food Assistance**

### ***Farmers Markets***

Ashburnham Farmers Market  
Barre Farmers Market  
Fitchburg Farmers Market  
Gardner Farmers Market  
Hardwick Farmers Market  
Holden Farmers Market  
Lancaster Farmers Market  
Orange Farmers Market  
Paxton Farmers Market  
Phillipston Farmers Market  
Princeton Farmers Market  
Sterling Farmers Market  
Westminster Farmers Market  
Winchendon Farmers Market

### ***Food Pantries***

Ashburnham Community Church  
Barre Food Bank  
Christ Episcopal Church  
First Baptist Church Community, Food Cupboard  
Ginny's Helping Hands Food Pantry  
Highland Baptist Church  
Lighthouse Food Pantry  
Ruth's Harvest Pantry, United Methodist Church  
Rutland Food Pantry  
Salvation Army Food Pantry  
Sharing Cupboard Food Pantry  
St. Joseph's Food Pantry  
Stow Food Pantry

Tri-Parish Community Church Food Bank  
Wachusett Food Pantry  
Westminster Food Pantry at First Congregational Church  
WHEAT Community Services  
Worcester County Food Bank

### ***General Resources***

Angel Food Ministries/Charlton Baptist Church  
Catholic Charities  
Fitchburg/Leominster Community Action Council  
Gardner Community Action Council  
MOC Elder Services, Senior Center  
North Central WIC Program  
Salvation Army  
Serve New England: Rollstone Serve Fitchburg  
Spanish American Center  
St. Vincent dePaul at Saint Leo's Church  
St. Vincent dePaul Society at Sacred Heart Church  
Supplemental Nutrition Assistance Program (SNAP)

### ***Meals***

Fellowship Table  
Kid's Café  
Mustard Seed  
Our Father's Table  
WHEAT Community Café

## **Health Services**

### ***Clinics/ Free Care***

Community Health Connections/Access Program  
Gardner Community Health Center  
Gateway Health Access Program  
MassHealth

### ***Dental***

Family Health Center Dental  
Great Brook Valley Health Center  
Mass Health Dental

### ***Emergency***

Battered Women's Resources, Inc.  
Childhood Lead Poisoning Prevention  
Rape Crisis Center of Central Mass. Inc.  
Suicide & Crisis Hotlines

### ***General***

ACTION Health Services, Community Health Connections  
Better Breathers Club  
Crosspoints Men's Health Collective (HIV)  
Gardner Visiting Nursing Association  
Leominster Community Health Center  
Lifetime Center for Family Health  
Mass. Rehabilitation Commission  
UMASS Memorial Home Health & Hospice

### ***HIV/AIDS***

HIV/AIDS Support, Education & Advocacy

### ***Home/Homeless Health Care***

Gardner Visiting Nurse Association  
Home Staff - Leominster

Montachusett Home Care  
Orchard Street Shelter

### ***Hospitals***

Athol Memorial Hospital  
Barre Health Center  
Burbank Rehabilitation Center  
Emerson Hospital  
HealthAlliance Hospital  
Heywood Hospital  
Nashoba Valley Medical Center  
St. Vincent's Hospital  
The Barre Integrated Health Center  
UMass Memorial Health Care  
UMass Memorial Medical Center  
Umass/Clinton Hospital

### ***Housing for Patients' Families***

ACS Worcester Hope Lodge  
Why Me/Sherry's House

### ***Pregnant Women & Children***

Care-Net Pregnancy Resource Center  
Child /Infant Safety/ CPR Class  
Children's Medical Security Plan/Healthy Start  
Early Intervention Partnership Program (EIPP)  
Early Pregnancy Class  
Lamaze Classes

## **Legal Assistance**

### ***Services/Support***

Child Support Enforcement Unit (Mass. Department of Revenue)  
Massachusetts Justice Project  
The Legal Assistance Corporation of Central MA  
Western Mass. Legal Service

## **Mental Health Services**

### ***Children & Adolescents***

Children's Friend, Inc.  
Children's Friends Society  
Flying High Farm  
University of Massachusetts Medical Center Dept. of Developmental and Behavioral Pediatrics

### ***Drug/Alcohol Abuse***

LUK Inc.: STEP (strengthen transition empower persevere)

### ***Mental Health***

Bolton Psychotherapy Association  
Center for Living and Working  
Children's Aid and Family Services  
Clinical and Support Options  
Community Healthlink - Lipton Center  
Family Services of Central Mass.  
First Call for Help  
Healthy Directions at HealthAlliance Home Health & Hospice  
Mass. Department of Children and Families  
Mass. Department of Developmental Services  
Mass. Department of Mental Health

Multicultural Wellness Center  
North Central Alcoholism  
Parents Helping Parents (parental stress line)  
Psychiatry and Family Counseling  
Riverside Counseling  
The Elise Lindsay Healing Center  
Youth Opportunities Upheld (YOU, Inc.)

### ***Self Help Groups***

Alcoholic Anonymous  
Debtors Anonymous  
Gamblers Anonymous  
Narcotics Anonymous

## **Senior Services**

### ***COAs/Centers/Clubs***

Ashburnham Council on Aging  
Barre Council on Aging  
Clinton Council on Aging  
Fitchburg Senior Center  
Gardner Council on Aging  
Holden Senior Center  
Lancaster Council on Aging  
Leominster Council on Aging  
Lunenburg Council on Aging  
MOC Elder Services, Senior Center  
Princeton Council on Aging  
Sterling Council on Aging  
Westminster Council on Aging

## **Special Needs Services**

### ***ADHD***

ADHD Parent Support Groups  
Metrowest CHADD  
National Resource Center on AD/HD

### ***Asperger's***

Asperger's Association of N.E.  
Asperger's Support Group

### ***Autism***

Autism Alliance of Metrowest  
Autism Resource Center of Central Massachusetts  
Autism Society of America, Massachusetts Chapter  
Doug Flutie Jr. Foundation for Autism  
Parents of Children with PDD/Autism

### ***Birth Defects***

Easter Seals  
March of Dimes

### ***Camps***

Camp Harrington  
Camp Kingsmont  
Hole-In-The-Wall Gang Camp

### ***Diabetes***

Barton Center For Diabetes Education

### ***Early Intervention***

Community Healthlink Lipton Center: Early Intervention

### ***Equipment***

Assistive Technology Resource Center  
Pass It On, Inc.

### ***Family Support***

Seven Hills Family Support Center

### ***Intellectual***

Best Buddies Massachusetts  
Learning Disabilities Program  
The Summer Institute for the Gifted at Amherst College

### ***Mental Health***

Centro Las Americas/ DDS Service  
The ARC Opportunity in North Central Mass

### ***Public School Special Education Offices***

Ashburnham-Westminster Regional School District  
Athol Royalston Public Schools  
Ayer Shirley Regional Public Schools  
Berlin-Bolyston Regional School District  
Clinton Public Schools  
Fitchburg Public Schools  
Gardner Public Schools  
Harvard Public Schools  
Leominster Public Schools  
Lunenburg Public Schools  
N. Quabbin Comm Coalition  
Nashoba Regional School District  
Quabbin Regional School District  
Wachusett Regional School District

### ***Resources***

A Parent's Guide to Special Education  
Family Information Needs Collection  
Federation for Children with Special Needs  
Greater Athol Area Advocates for Families with Special Needs

### ***State Agencies***

Mass. Advocacy Center  
Mass. Department of Developmental Services  
Mass. Department of Education  
Mass. Department of Mental Health  
Mass. Development Disabilities Council

## **Town Information**

### ***Government***

Ashburnham Town Hall  
Athol Town Hall  
Barre Town Hall  
Bolton Town Hall  
Clinton Town Hall  
Fitchburg City Hall  
Gardner City Hall  
Hardwick Municipal Office Building  
Hubbardston Town Hall  
Lancaster Town Hall  
Leominster City Hall  
New Braintree Town Hall

Oakham Town Hall  
Petersham Town Hall  
Royalston Town Hall  
Westminster Town Hall  
Winchendon Town Hall

***News***

Clinton Item  
Clinton Mass. Online  
Fitchburg Pride  
Leominster Champion  
Winchendon Online Newsletter

**Veterans Services**

***General***

Coming Together Around Military Families  
Military OneSource  
National Military Family Association (NMFA)  
Veteran Hospice Homestead  
VISN 1: VA New England Health Care System

***Local Veterans Agent***

Barre Veterans Services  
Veterans Services Officer

***State***

Massachusetts Department of Veterans Services  
Massachusetts Veterans Memorial Cemetery  
Statewide Advocacy for Veterans Empowerment (SAVE)



This North Central Massachusetts Family Resource Guide was compiled through a collaboration of **Coordinated Family and Community Engagement (CFCE)** programs of Central Massachusetts. CFCE programs are funded through grants from the Massachusetts Department of Early Education and Care (EEC) and provide the following:

- ✓ Family education, early literacy, and child development information and resources.
- ✓ Family activities and community events.
- ✓ Opportunities for parents/guardians to network with other parents/guardians.
- ✓ Assistance in accessing high quality early education & care or after school programs.
- ✓ Transition supports that address the needs of children and families, including school readiness activities.
- ✓ Assistance in accessing health and developmental screenings.
- ✓ Leadership opportunities for parents/guardians.
- ✓ Local early childhood councils.

**For more information:  
Contact your local CFCE office, found on page 2 of this guide.**